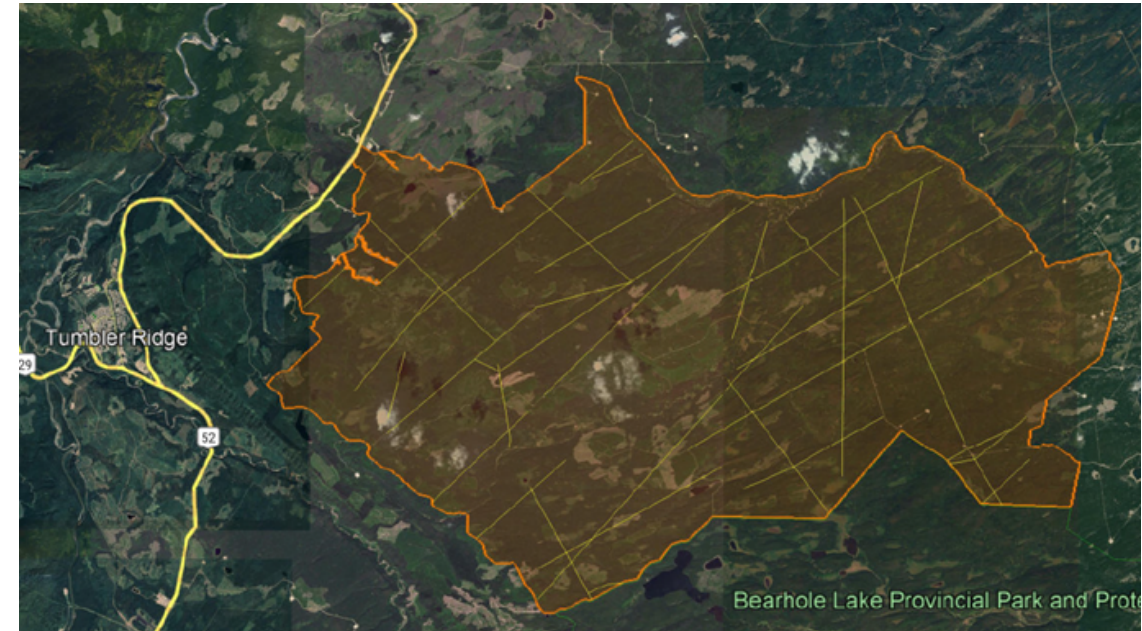


West Moberly-DWB LP

- **Additional Participants:** West Moberly First Nation
- **Project Location:** Nachii Adaage (Big Lick) area east of Tumbler Ridge
- **Restoration Goal:** Identify and prescribe restoration treatments for up to 100 km of seismic lines from within the +-37,000 ha area
- **Benefits:** Caribou, traditional use native plant gathering, improve regional connectivity, provide habitat for small mammals (e.g., martin, hare, porcupine)



West Moberly-DWB LP

Project Phases:

1: Pretreatment Inventory and Planning

- Preliminary desktop survey targeting 1960-1990 era 2D seismic/campsites
- Indigenous and stakeholder engagement
- Data collection and site verification
- Reclamation stock activities
- Regulatory permitting
- Community capacity building
- Site-specific restoration planning
- Completions report

