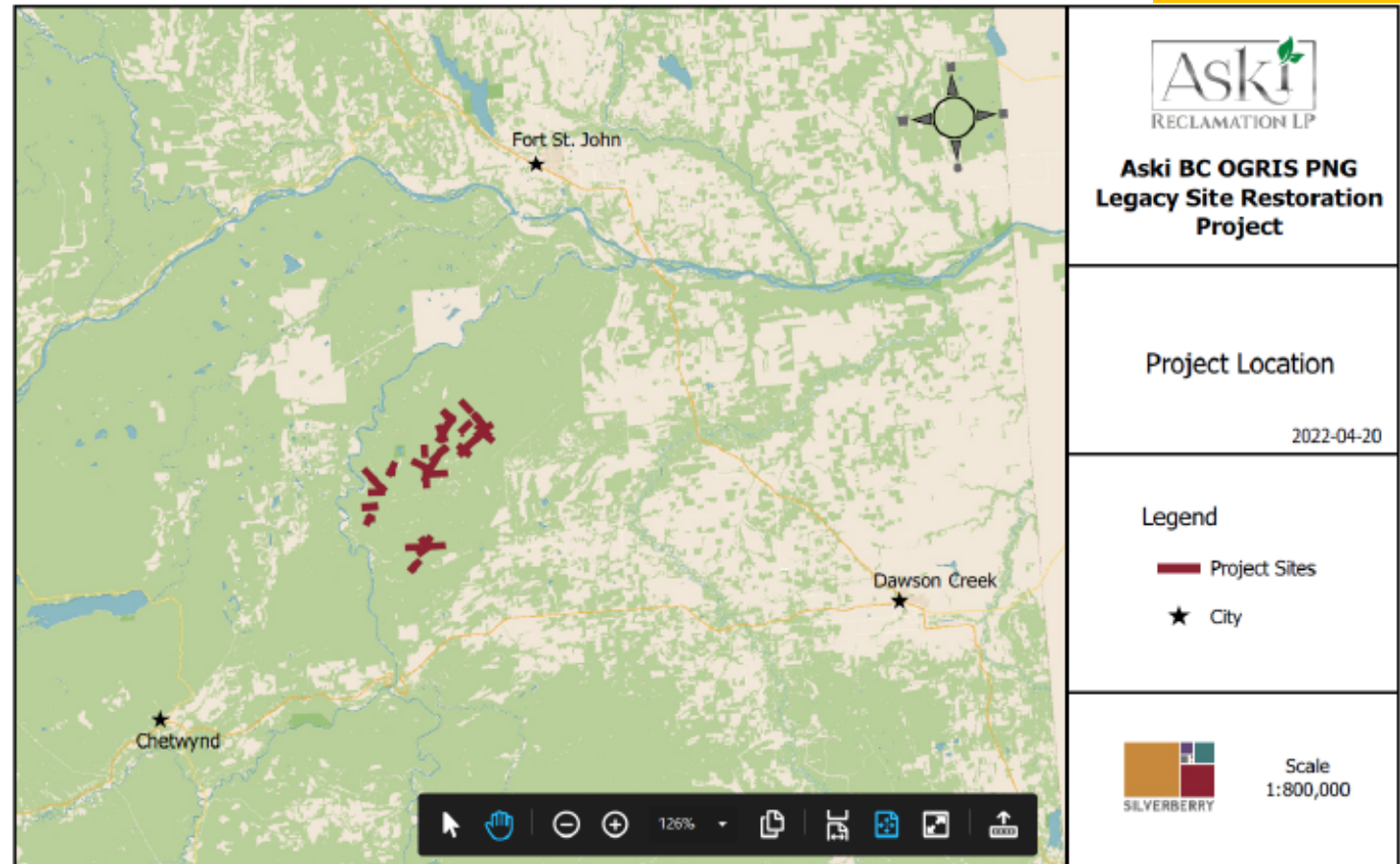


PNG Legacy Sites Restoration

Project Profile

Aski Reclamation with Silverberry Pro

- **Participants:** Aski Reclamation LP (Saulteau First Nations-SFN) and Silverberry Pro
- **Project Location:** Groundbirch
- **Restoration Goal:** 32 km of seismic lines
- **Benefits:** SFN community (cultural, spiritual, sustenance/medicinal gathering and historic significance)

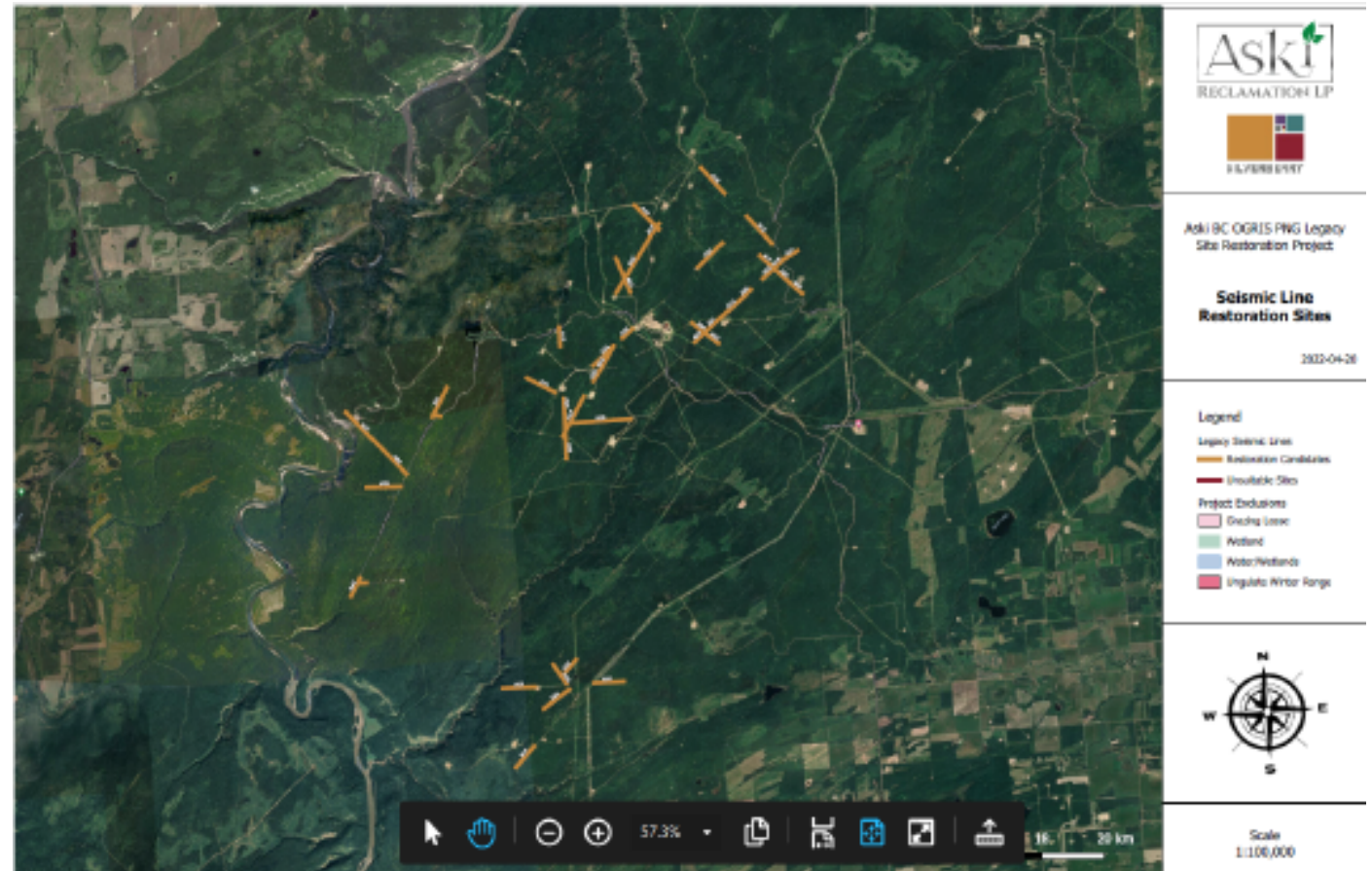


Aski Reclamation with Silverberry Pro

Project Phases:

1: Pre-Treatment Inventory and Planning

- Aerial imagery and spatial data review
- Land conflict identification and resolution; permitting and tenuring
- Helicopter and field survey (winter)
- Site selection refinement
- Pre-treatment planning and prescription development
- Execution and access control planning
- Capacity building



Aski Reclamation with Silverberry Pro

Project Phases:

2: Treatment Implementation (Spring and Fall, 2022)

- Field and logistics planning
- Final site selection (spring)
- Ecological (live staking, seedling transplant, natural regeneration)
- Baseline monitoring plot establishment
- Capacity building

3: Restoration Activity Performance Monitoring (Fall, 2022)

- Reporting and mapping
- Program debrief
- Capacity building