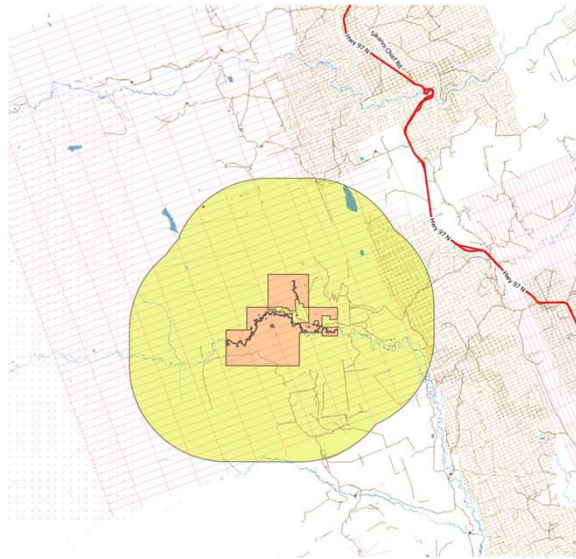


## Blueberry River First Nations

---

- **Additional Participants:** Keefer Ecological Services, Golder Associates, Royal Roads University
- **Project Location:**
  - **Priority Area 1:** BRFN Pink Mountain TLE Selection Area (protected by *Land Act* Sec. 17)
  - **Priority Area 2:** 10km buffer around the TLE Selection Area
- **Restoration Goals:**
  - up to 40 km of seismic lines for wildlife and continued land use
  - biocultural restoration (land relationships and intergenerational knowledge transfer)



## Blueberry River First Nations

---

### Project Phases:

#### 1: Pre-treatment Inventory & Planning

- Fieldwork and drone + helicopter flights to identify suitable restoration areas within PA1 first and, if required in PA2 (being strategic with site selection to avoid conflicts)
- Baseline data gathering of soil/veg/wildlife (including trail cams) to inform prescriptions
- Initiate BRFN community consultation, permit applications
- Develop a detailed treatment plan
- Initiate seed collection including direct mentorship/training on the process for up to 20 community members
- Initiate seedling procurement

