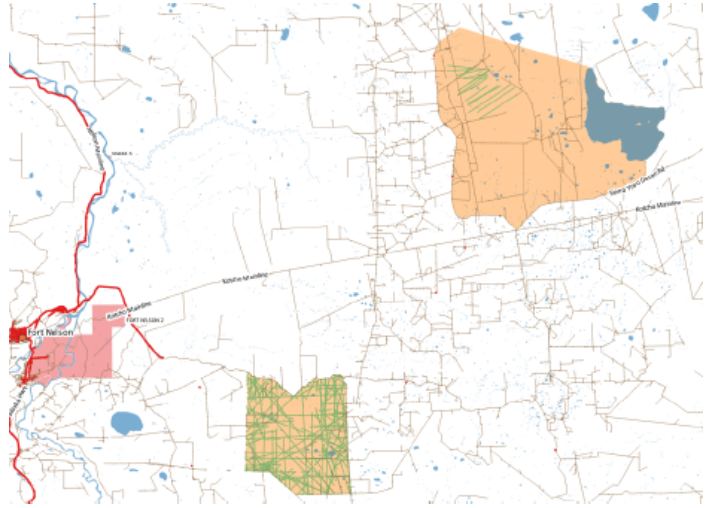


PNG Legacy Sites Restoration--Project Profile

Fort Nelson First Nation (FNFN)

- **Additional Participants:** FNFN Guardians and contractors (The Firelight Group, Swamp Donkey, Eh-Cho-Dene GP), Twin Sisters Native Plant Nursery
- **Project Location:** Medzih'tene area along the 61 Road/Elleh Creek and Kotcho Lake (Snake-Sahtaneh Range for Boreal Caribou)
- **Restoration Goal:** 105 km of seismic lines
- **Benefits:** Caribou (Snake-Sahtaneh range), community (capacity building, traditional knowledge inclusion)

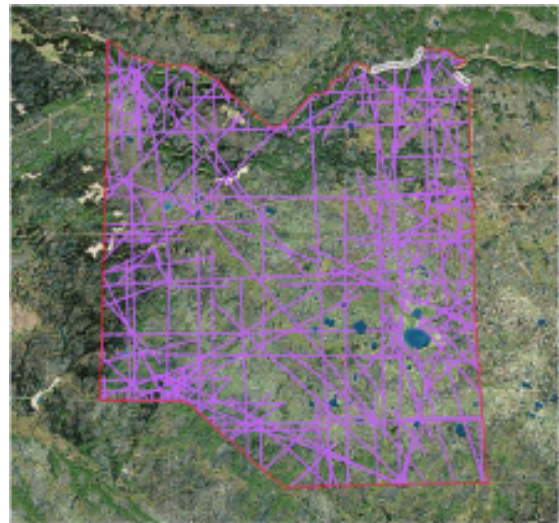


Fort Nelson First Nation (FNFN)

Project Phases:

1: Pre-treatment Inventory and Planning

- Ongoing, supported in part by SERN BC.
- Identify linear features for treatment including areas inaccessible by equipment
- Classify and rank the identified features based on a range of ecological and logistical attributes, wildlife/habitat use data, and wetland data to ID quality caribou habitat
- Drone reconnaissance to evaluate current seismic recovery state and available access routes
- Select treatment sites
- Develop a prescription method
- Secure supplies (e.g., nursery stock)



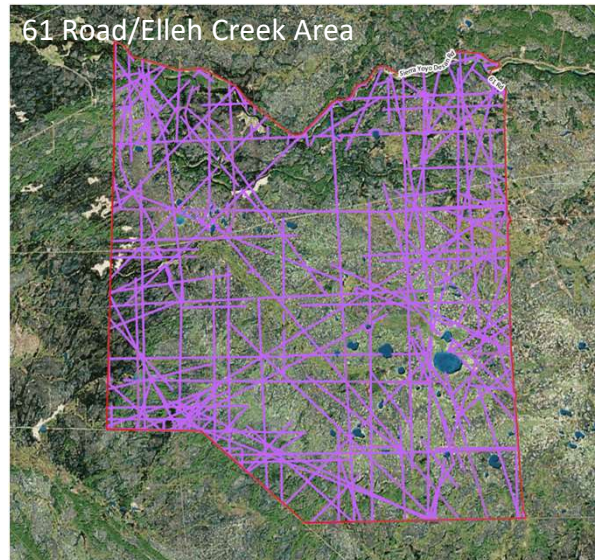
PNG Legacy Sites Restoration--Project Profile

Fort Nelson First Nation (FNFN)

Project Phases:

2: Treatment Implementation

- **January – June 2022** (restoration in winter, seeding in fall)
- Methods include whole hummock transplanting, tree and shrub modification (tree pushing, pushing and partial burying, tree hold-downs, and terminal leader trimming), and free planting
- **September/October 2022** (planting and reporting)
- Fly (heli) crews to treatment locations and plant seedlings
- Three field trials: local microbe cultures and manipulated tree growth patterns (bending to encourage lateral growth and covering portions of felled trees with hummocks to mimic branch sprouting)



Fort Nelson First Nation (FNFN)

Project Phases:

3: Restoration Activity Performance Monitoring

- Vegetation monitoring (June – July 2022)
- Camera Trap monitoring (summer / fall 2022)
- Future monitoring framework (permanent vegetation survey plots) will be established in conjunction with Phase 2
- Final reporting

