



BC-OGRIS 2015-2016 Final Report for Year 4 of the Induced Seismicity Monitoring Project (ISMP)

Carlos Salas, VP Oil & Gas, Geoscience BC

March 15, 2016

Contents

Background	2
Summary of Activities	3
Results and Discussion	4
Communication and Extension Plan	11
For Additional Information	14
Appendix A: Earthquakes recorded between April 2013 and January 2016.....	15

Background

The BC Induced Seismic Research Consortium was created in 2012 between Geoscience BC, the Canadian Association of Petroleum Producers (CAPP), the BC Oil & Gas Commission (BCOGC) and Natural Resources Canada (NRCan) to help improve the accuracy of the Canadian National Seismograph Network (CNSN). The consortium’s mandate is to collect, interpret and make public the data collected from the installation of six new seismograph stations and to complement the pre-existing CNSN network (Figure 1). The *Induced Seismicity Monitoring Project (ISMP)* has \$1 million in funding from 50/50 equity partners Geoscience BC and BCOGRIS with in-kind support from CAPP, BCOGC and NRCan. The project has a mandate to monitor induced seismic activity for a total of five years (until June 2017).

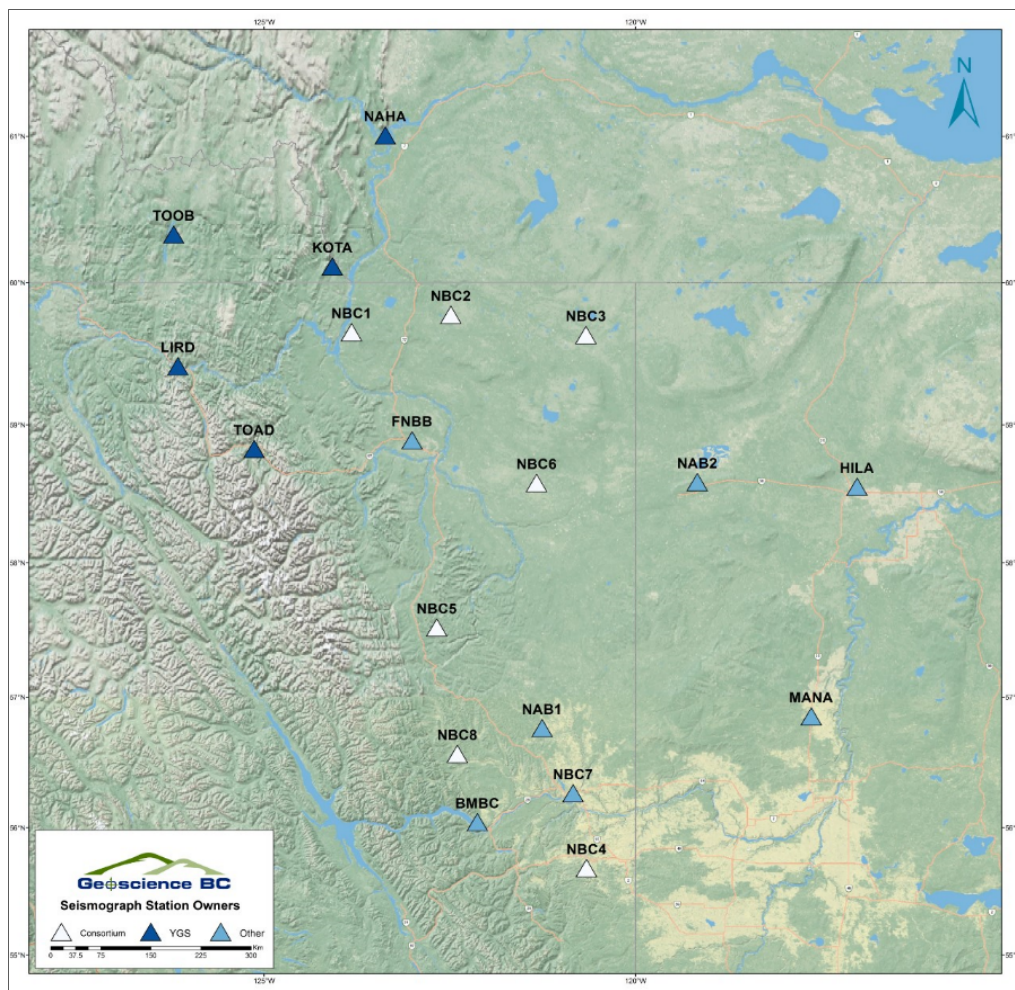


Figure 1. Location of all current Canadian National Seismograph Network stations in northeastern British Columbia. The original two pre-enhanced network stations are labelled as BMCC and FNBB.

Summary of Activities

The enhanced network has been operational since the spring of 2013. The project lifecycle consists of three stages: the initial stage (2012-2013) involved the procurement and installation of the enhanced monitoring network, the second stage began with the collection of data (2013-ongoing) and the current third stage which is focussed on the interpretation of the data.

Operationally, there were two major events for the project this past year. First, one additional station was bought from an operator for the cost of assuming the telecommunication's bill (~\$600 per year). The station is located in the Graham area and will provide data from the historically seismically-active water disposal well. The addition of these two new stations now brings to a total eleven stations comprising the enhanced seismic network in NEBC (Figure 1) which can be used to monitor potential induced seismicity from shale gas operations.

The second event involved expanding the BC Induced Seismicity Research Consortium (i.e. CAPP/BCOGRIS, BCOGC, NRCan, Geoscience BC) to include the Yukon Geological Survey. The Memorandum of Understanding (MOU) for the Induced Seismicity Monitoring Project was altered to include the new partner. As part of the admission of the Yukon Geological Survey (YGS) into the project, the YGS will install five new seismograph stations in the Liard Basin (see Seismograph Station Owners-YGS in Figure 1), of which two will be installed in the BC-portion on the Liard Basin. The new stations will be integrated into the CNSN. As part of the amended MOU with the YGS, the operational costs will be redistributed among the partners based on a pre-asccribed split. The new stations are expected to be operational by summer 2016.

In early February 2015, the project seismologist (Dr. Alireza Mahani) began working at NRCan's Pacific Geoscience Centre. His main tasks are to: 1) conduct real-time analysis of seismic events captured by the network; 2) evaluate the resolution of the network; 3) interpret the collected data; and 4) conduct case studies of specific event clusters.

The collection of seismological data from the network is now providing various stakeholders with data on oil and gas-related induced seismicity which is being used to aid in decision making. For example, the BCOGC is using the data collected to help regulate oil and gas operations in NEBC and to ensure continued safe natural gas development. BCOGC also recently held (February 2016) an Induced Seismicity Workshop at NRCan's Pacific Geoscience Centre, to unveil potential enhanced seismicity regulatory changes. Much of the background information needed to make such a proposal came from the data being collected by the enhanced network. Additionally, technical support on many seismological issues is being provided to the regulator by the project's resident seismologist. It should also be added that having real-time, public-facing seismic monitoring is extremely beneficial when the regulator is interfacing with both the energy sector and the public, regarding elevated seismic levels from completion operations.

The seismological data catalogue collected by the network is also being used many Canadian research scientists to guide research within the induced seismicity field. Here is a non-exhaustive list of current Canadian scientists actively working on induced seismicity in BC:

- Dr. Gail Atkinson, University of Western Ontario
- Dr. Mirko van der Baan, University of Alberta
- Dario Baturan, Nanometrics
- Dr. Amanda Bustin, University of British Columbia
- Dr. Dave Eaton, University of Calgary
- Dr. Erik Eberhard, University of British Columbia
- Dr. Amir Farahbod, Natural Resources Canada
- Dr. Hadi Ghofrani, University of Western Ontario
- Dr. Rebecca Harrington, McGill University
- Dr. Honn Kao, Natural Resources Canada
- Dr. Ali Mahani, BC Seismic Research Consortium
- Ryan Schultz, Alberta Geological Survey

Results and Discussion

Evaluation of the Enhanced Network

With close to three years of data acquired, one of the initial tasks of the project seismologist was to evaluate the enhanced regional network and make recommendations for future improvements.

In order to evaluate the performance of the network (Mahani et al., 2015) the minimum detectable magnitude (smallest seismic event) from the two stations operating in early 2012 (i.e. pre-enhanced network) was compared to those from the current enhanced network (Figure 2). The research shows that during the period 2013-2015, during which the enhanced network has been operational, the minimum detectable magnitude has dropped almost 2M units of magnitude. Depending on the location, the minimum detectable magnitudes of seismic events will range from 1.6-2.6M.

The post-enhanced network was also evaluated for epicentre accuracy. The enhanced network's accuracy in locating the epicenter in areas with good seismograph coverage is below 3 km, but can be up to 10 km in areas where the network is sparse. It was also noted that there is an east-west azimuthal anisotropy, especially in the northern part of the Montney Play. Certainty in pin-pointing the hypo center depth (the depth to the location of the seismic event) is still poor.

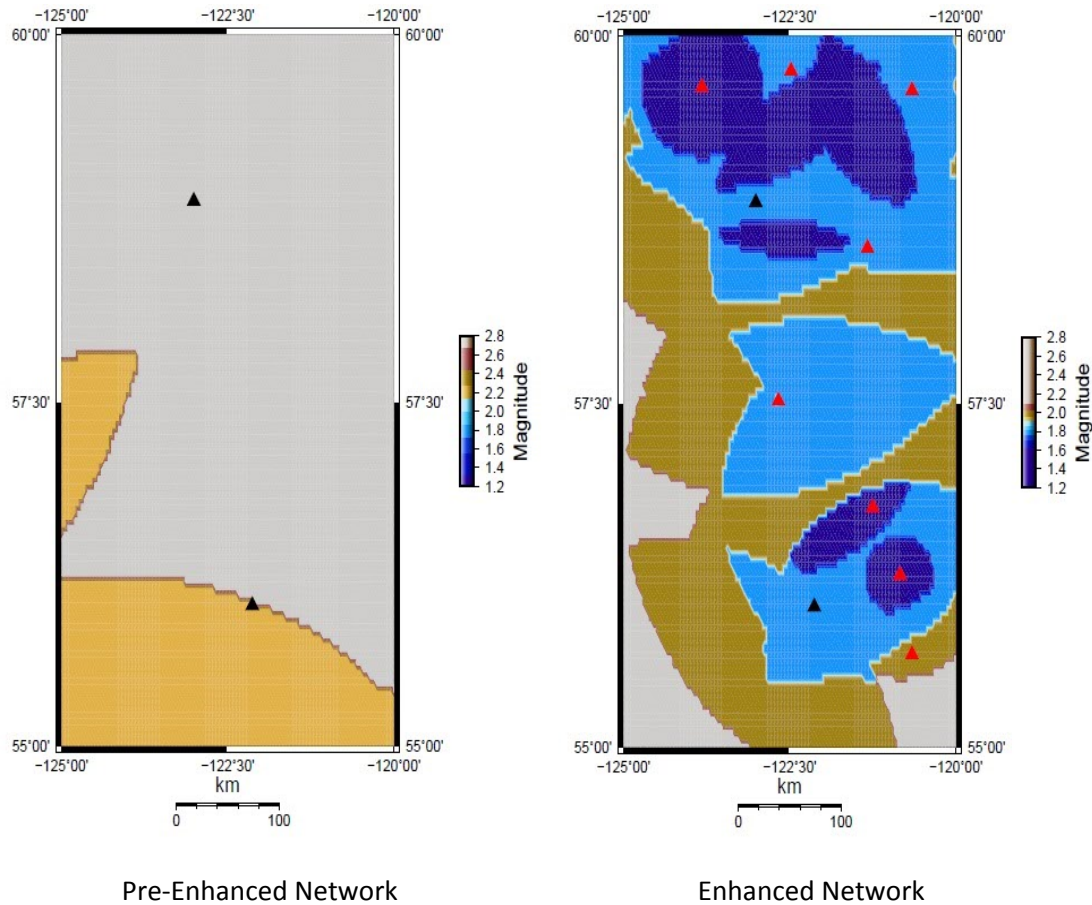


Figure 2: (Left Image) Magnitude of completeness for the original two CNSN stations of the pre-enhanced network. Note the minimum detectable magnitude for most of NEBC at that time was ~2.8M. (Right Image) Magnitude of completeness for the stations of the enhanced network. Note how the minimum detectable magnitude for the enhanced network has dramatically dropped, in some places to levels of 1.6M (Mahani et al., 2015)

The enhanced network’s ability to capture lower-level events has led to a dramatic (Figure 3) rise in the number of events being recorded. Figure 3 shows a plot of the cumulative number of monitored events versus time since the inception of seismic data records (March 13, 1985), as a steady increase (blue line) until ~7000 days (i.e. ~19 years later, or 2004), when the first sharp increase is noted. Then as soon as the enhanced network becomes operational (at ~ 11000 days), the number of recorded events increases dramatically (grey line) at a different slope. It should be noted that the seismic events recorded are not differentiated between naturally-occurring and those which are induced.

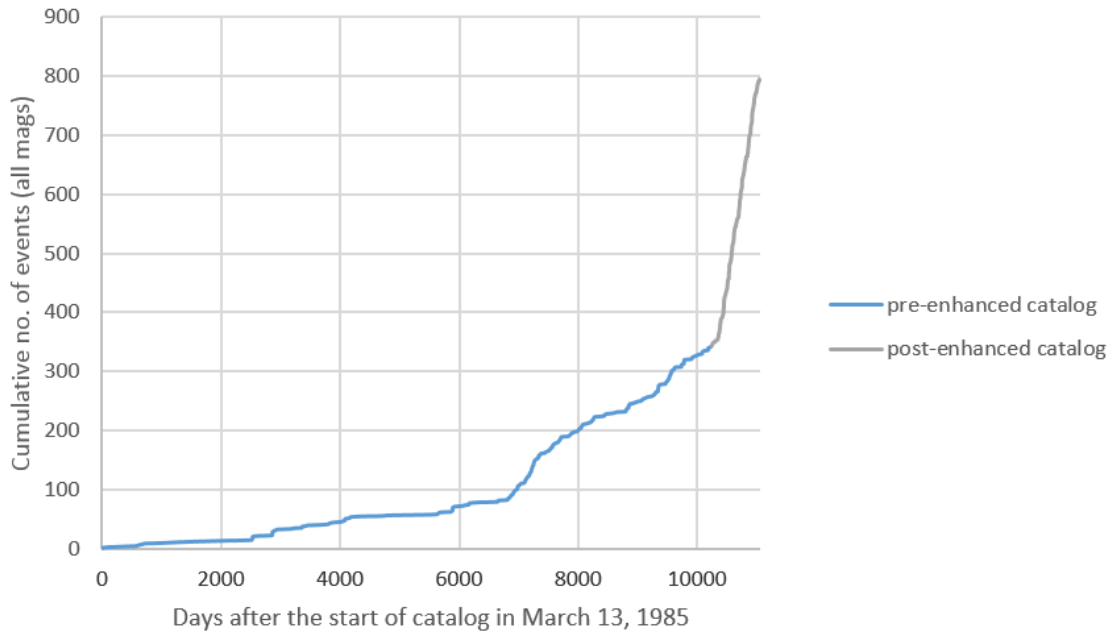


Figure 3: Cumulative number of all the events since the start of the catalogue in 1985. (Mahani et al. 2016). Note the sharp increase in the monitored events after the addition of more seismograph stations (the grey line)

To get an understanding of the improvement levels of the post-enhanced network’s ability to capture lower magnitude events, Figure 4 shows a comparison of the daily rate of events pre-enhanced (blue line) network versus those of the post-enhanced network (orange line). The display shows that the pre-enhanced rate is flat throughout the whole range of magnitudes, whereas the post-enhanced response shows a more “complete” response - meaning, many more smaller seismic events and fewer larger events. The resultant complete catalogue of seismic responses from the enhanced network is much closer to the expected seismological answer, than to that of the pre-enhanced network.

We can also get an idea of the improvement levels by comparing the number of pre-enhanced and post-enhanced seismic events (grey line on Figure 4). The orange and blue lines are the daily rate of the events for the post- and pre-enhancement eras. Since we can assume that all of magnitudes 2 and above were recorded in the post-enhancement era (i.e. true daily rate of occurrence), therefore, we can see the inadequacy of the network prior to the addition of new stations. The gray line shows the ratio of pre- to post-enhancement. For example, the daily ratio of magnitude 2.2 in the pre- and post-enhanced era is ~ 0.01 and ~ 0.07 , respectively. Since 0.07 is the true daily occurrence of earthquakes at this magnitude, we can say that the pre-enhanced network only recorded approximately 14 percent of these events. The gray line increases with increasing magnitude, as expected (i.e. the pre-enhanced network

was capable of recording only the higher magnitude events), but did poorly on the lower magnitude events (Mahani, 2016 pers. comm.).

The conclusion is that the pre-enhanced network was deficient in capturing the smaller events. The increase in events monitored in the post-enhanced era is largely due to the post-enhanced network’s improved lower-limit thresholds on monitoring seismic events.

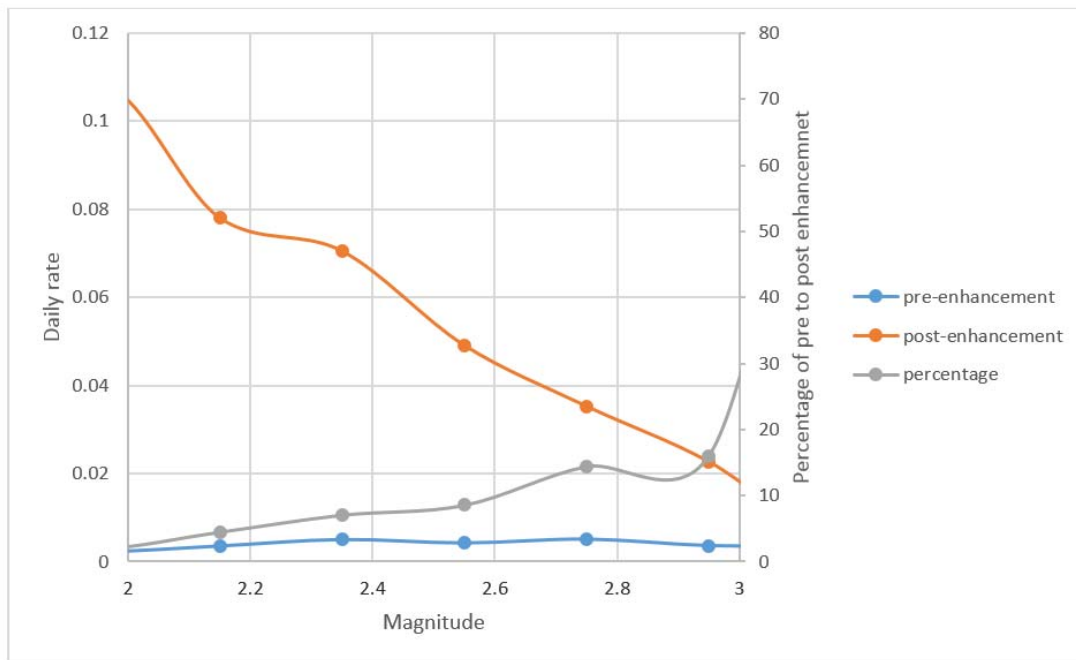


Figure 4: The orange and blue lines are the daily rate of the events for the post- and pre-enhancement eras. Since we can assume that all of magnitudes 2 and above were recorded in the post-enhancement era (true daily rate of occurrence), therefore, we can see the inadequacy of the network prior to the addition of new stations. (Mahani,2016 pers. comm.)

From the assessment of the current enhanced network the following recommended improvements to the network include:

- Improving the amount of seismic event signal received. – move stations which have a low signal-to-noise ratio to area which has lower ambient noise
- Addition of more seismic stations
- Magnitude values from local high precision seismic sensors (i.e. dense arrays) used during completion operations are different than those from the CNSN arrays. Use these arrays for calibration of the CNSN stations so that proper comparisons between the two can be made
- Addition of ground motion sensors

Results to Date

Almost all of the monitored seismicity is associated with current activity in the Montney gas trend (the greater Peace River Region). Due to the drop in gas commodity prices, and low percentage of value-add natural gas liquids in the gas stream, drilling in the Horn River Basin is now non-existent and so is the induced seismicity. As such, all the results presented are within the greater Montney gas trend.

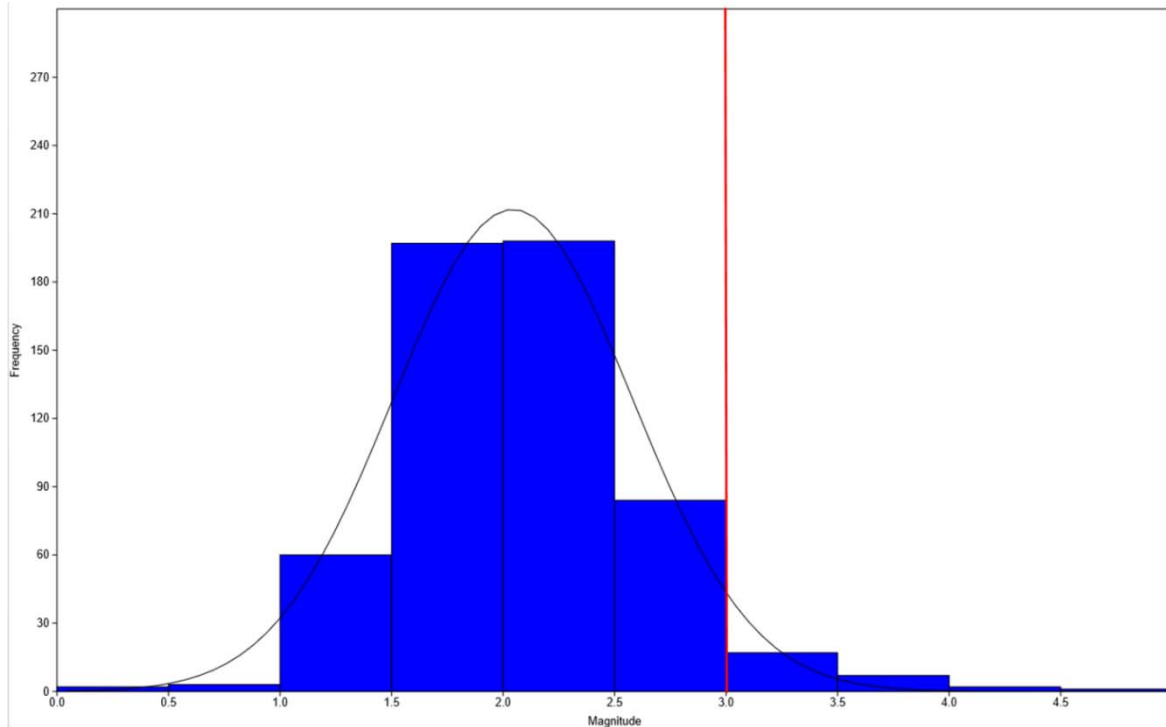


Figure 5: Frequency versus Magnitude plot for all seismic events monitored from April 2013 to the end of 2015. The mean magnitude from a sample of 571 events is 2.04. Anything to the left of the redline (magnitude 3.0) is unlikely to be felt on surface. The bell-shaped line indicates the data is normally distributed. A list of all the events is included in Appendix A.

In order to get a better statistical understanding of all the recorded events by the enhanced network, a simple histogram of frequency vs. magnitude of seismic events (Figure 5) was constructed. The vast majority of events (95.3%) over the mapped region were below magnitude 3.0M (Figure 6). The remaining 4.7% (27 events) were above magnitude 3.0M and were likely able to be felt on surface.

Further statistical analysis of the recorded data from the enhanced network shows the majority of the events are within 1.5-2.5 M_L range (Figure 5) with a mean of 2.04 M_L and a standard deviation of 0.53 M_L – meaning that 68.2% of the events lie between 2.61 M_L and 1.55 M_L magnitude. The mean magnitude detected from events this year 2.04 M_L , is slightly lower than last year (2.08 M_L).

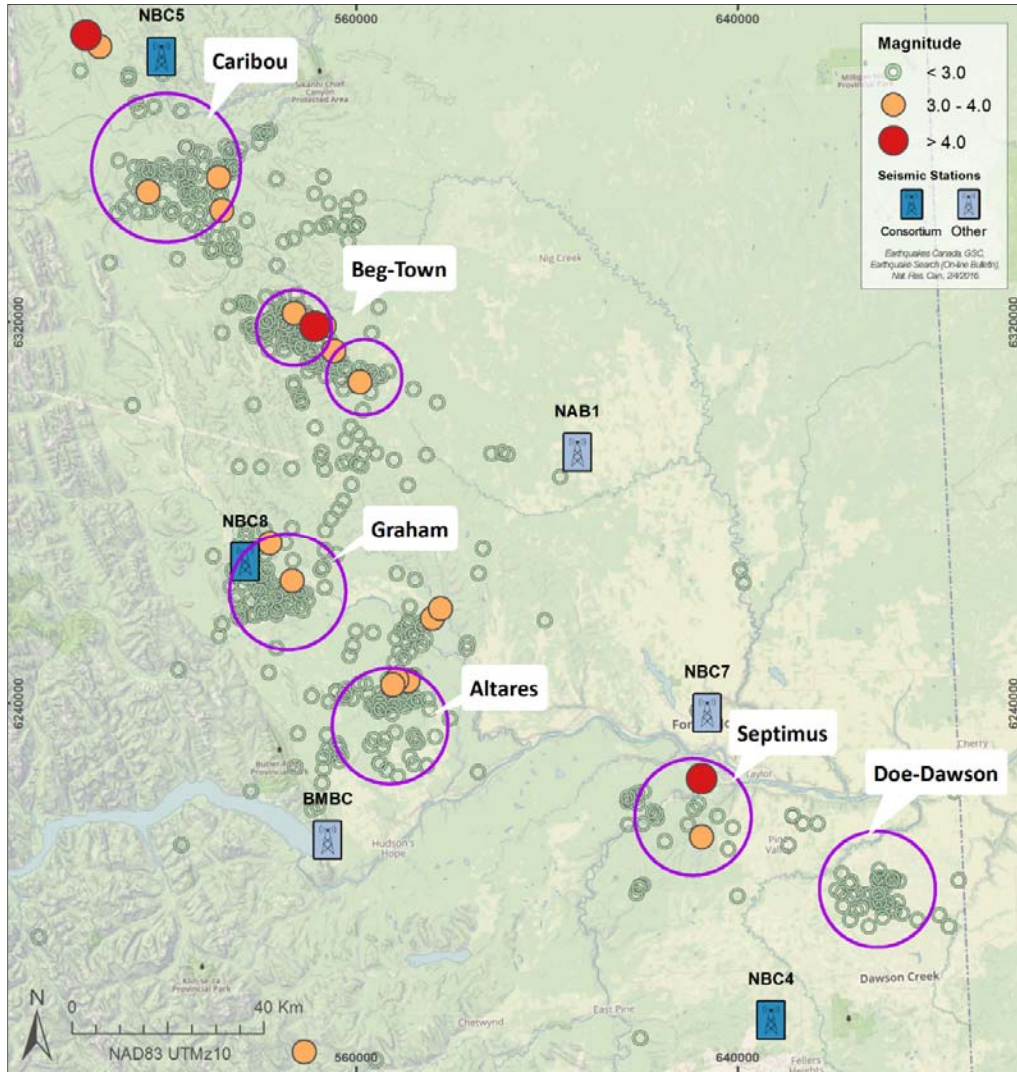


Figure 6: All seismic events monitored by the enhanced network since late spring 2013 until the end of December 2015. Seven areas of elevated levels of induced seismic activity have been identified by the BCOGC.

It is interesting to note that each successive year the mean magnitude has been slowly dropping. Although there may be no causal reason for this decline, it could be due to:

1. Improvements to the network, including addition of more stations, allowing detection of lower magnitude events;
2. Improved completion techniques that are mitigating induced seismic responses.

Seismic events within the range 1.55-2.61 M_L (one standard deviation from the mean) are generally not felt on surface whereas those higher 3 M_L are more likely to be felt on surface.

Although the enhanced network recorded 27 events above 3.0M to date, only 17 events have been felt on surface and have varied in intensity between III and IV (weak to light) on the Modified Mercalli Intensity Scale. No damage or injuries were reported from the felt events. The three largest recorded events occurred in Caribou (15-08-17), 4.6 M_L ; south of Trutch - 4.4 M_L (15-08-04), and Fort St. John (13-05-27), 4.2 M_L . All were felt on surface; however, no damage or injuries were reported.

Figure 6 shows the spatial distribution of the events recorded by the enhanced network, within which the BCOGC in their *Investigation of Observed Seismicity in the Montney Trend* (BCOGC, 2014 <https://www.bco.gc.ca/investigation-observed-seismicity-montney-trend>) has noted six (or seven, if Beg and Town are considered individually) areas of elevated levels seismicity.

Of the six clusters of elevated induced seismicity, five were attributed to hydraulic fracturing operations while one (Graham) was due to water disposal. Corresponding histograms of frequency vs. magnitude for the six areas are shown below (Figure 7). It should be noted that the vast majority of monitored events corresponding to the individual clusters are below 3.0M, the approximate level at which seismic events are empirically felt on surface. Why these areas have elevated levels of seismicity, compared to other areas which are devoid of induced seismic activity is helping to focus research efforts.

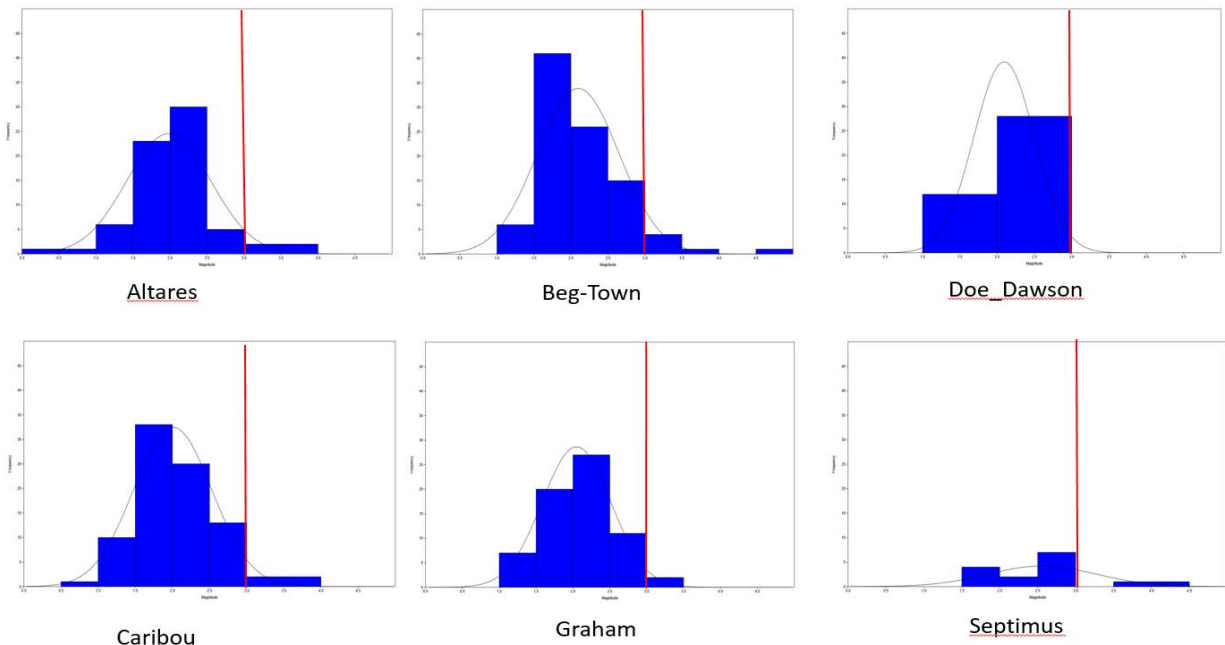


Figure 7: Comparative Frequency vs Magnitude plots for the six areas. Maximum scale on frequency plot is 50 events and maximum magnitude is 5M. Any event lying to the left of the red line (3.0M) is unlikely to be felt on surface. The bell-shaped line indicates the data is normally distributed.

Communication and Extension Plan

Throughout the past year, members of the consortium have presented the following papers or presentations:

PRESENTATIONS

Dr. Ali Mahani (Project Seismologist)

Induced Seismicity Monitoring Project, *Canadian Society for Unconventional Resources Induced Seismicity Workshop, November 19, 2015, Calgary*

Regional Monitoring of Induced Seismicity in NE BC, *Canadian Society for Unconventional Resources technical luncheon, November 12, 2015, Calgary*

Panelist for the Technical Meeting on Traffic Light Protocols for Induced Seismicity, *University of Calgary, October 6, 2015*

Workshop on Canadian Induced Seismicity Collaboration, *TransAlta Induced Seismicity Workshop, Calgary, October 5, 2015*

Monitoring of Induced Seismicity in Northeast British Columbia, *Canadian Society for Unconventional Resources, June 16, 2015, Calgary, Alberta*

Performance Analysis of the Canadian National Seismic Network (CNSN) in Northeast British Columbia, Ali Mahani, Honn Kao, Dan Walker, Jeff Johnson, and Carlos Salas, *9th Unconventional Gas Technical Forum, June 8-9, 2015, Victoria, BC (poster presentation)*

Dan Walker (BCOGC)

Dan Walker, Jeff Johnson, Ron Stefik, Michelle Gaucher (2016): An induced seismicity update for northeast BC. Canadian Energy Technology and Innovation special issue (in press)

Honn Kao (GSC)

Farahbod, A.M., H. Kao, J.F. Cassidy, D.B. Snyder, S. Cairns, and D. Walker (2015). Correlation of hydraulic fracturing induced seismicity with operation parameters of shale gas extraction: Two case studies in western Canada, Abstract NG13A-1870 presented at 2015 Fall Meeting, AGU, San Francisco, Calif., 14-18 Dec.

Kao, H., A.B. Mahani, G. M. Atkinson, D.W.S. Eaton, and S. Maxwell (2015). Traffic light protocol for induced seismicity: What is the best strategy? Abstract S11C-08 presented at 2015 Fall Meeting, AGU, San Francisco, Calif., 14-18 Dec.

Wang, B., R.M. Harrington, Y. Liu, and H. Kao (2015). Earthquakes in three Canadian shale gas basins based on a multi-station matched-filter approach with dense station coverage, Abstract S11C-06 presented at 2015 Fall Meeting, AGU, San Francisco, Calif., 14-18 Dec.

Kao, H., M. Lamontagne, J.F. Cassidy, D. Snyder, A.M. Farahbod, A.B. Mahani, and D. Lavoie (2015). An update on Natural Resources Canada's Induced Seismicity Research Project, presented at the 87th Seismological Society of America East Section Annual Meeting, Memphis, Tennessee, USA, 5-8 Oct.

Kao, H. (2015). Baseline monitoring of background seismicity for major unconventional oil and gas basins, webinar presented at the Canada-USA-Mexico Trilateral Cooperation on Energy Workshop, Sep 18.

Kao, H., A.M. Farahbod, D. Walker, D.B. Snyder, S. Cairns (2015). Investigation of Induced Seismicity Related to the Development of Shale Gas in Northeast British Columbia and Northwest Territories, Canada, Abstract S21A-02 presented at 2015 AGU-GAC-MAC-CGU Joint Assembly, Montreal, Quebec, Canada, 3-7 May.

Kuponiyi, A., H. Kao, S.E. Dosso, G. Spence, and J.F. Cassidy (2015). Crustal investigation of the Gulf of Saint Lawrence, eastern Canada using ambient seismic noise tomography, Abstract S42A-08 presented at 2015 AGU-GAC-MAC-CGU Joint Assembly, Montreal, Quebec, Canada, 3-7 May.

Kao, H., 2015. Natural Resources Canada's Induced Seismicity Research, Schatzalp Induced Seismicity Workshop, Davos, Switzerland, 10-13 March.

Kao, H. (2015). Global understanding of induced seismicity, NRCan ESS Food for Thought Seminar, Sidney, BC, 25 June.

Kao, H. (2015). Induced seismicity and the development of unconventional oil and gas, Department of Earth and Environmental Sciences Seminar, National Chung-Cheng University, Chai-Yi, Taiwan, 14 Oct.

Kao, H. (2015). Investigating the relationship between hydraulic fracturing and induced seismicity, Department of Earth Sciences Seminar, National Central University, Chung-Li, Taiwan, 16 Oct.

Kao, H. (2015). Natural Resources Canada's Induced Seismicity Research Project, Central Weather Bureau Seminar, Taipei, Taiwan, 23 Oct.

Carlos Salas (Geoscience BC)

Geoscience BC Oil & Gas initiatives Update, CAPP EPG, November 3, 2015. Calgary, AB

TECHNICAL PAPERS

Babaie Mahani, A., Kao, H., Walker, D., Johnson, J. and Salas, C. (2016): Regional Monitoring of Induced Seismicity in Northeastern British Columbia; in Geoscience BC Summary of Activities 2015, Geoscience BC, Report 2016-1

Mahani, A. B., H. Kao, D. Walker, J. Johnson, and C. Salas (2016). Performance evaluation of the regional seismograph network in northeast British Columbia, Canada, for monitoring of induced seismicity, Seismol. Res. Lett., in press.

Atkinson, G. M., D. W. Eaton, H. Ghofrani, D. Walker, B. Cheadle, R. Schultz, R. Shcherbakov, K. Tiampo, J. Gu, R. M. Harrington, Y. Liu, M. v. d. Baan, and H. Kao (2016). Hydraulic fracturing and seismicity in the Western Canada Sedimentary Basin *Seismol. Res. Lett.*, in press.

Larochelle, S., Y. Liu, and H. Kao (2016). Poroelastic modeling of hydraulic fracturing induced earthquake stress field; Geological Survey of Canada, Open File 8082, in press.

Farahbod, A.M., H. Kao, J.F. Cassidy, and D. Walker (2015). How did hydraulic fracturing operations in the Horn River Basin change the seismicity patterns in northeast British Columbia, Canada? *The Leading Edge*, 34, 658–660, 662–663, doi:10.1190/tle34060658.1.

Farahbod, A.F., H. Kao, D.M. Walker, and J.F. Cassidy (2015). Investigation of regional seismicity before and after hydraulic fracturing in the Horn River Basin, northeast British Columbia, *Can. J. Earth Sci.*, 52(2), 112-122, doi:10.1139/cjes-2014-0162.

GEOSCIENCE BC NEWS and PROMOTION

The following news releases or promotional material was produced by Geoscience BC this past year:

EXTERNAL COVERAGE

- Monitoring of Induced Seismicity in Northeast BC - 2015
http://www.csur.com/images/CSUR_events/2015/Ali%20Mahani.pdf

GBC BROCHURES

- Energy projects overview
<http://www.geosciencebc.com/i/pdf/Leaflet-energy2015.pdf>

EVENTS ATTENDED by Carlos Salas

- CSPG conference – Calgary, May 4-6, 2015
- PGC Traffic Light Protocol for induced seismicity workshop – Calgary, October 6
- CSUR seismicity forum – Calgary, November 19
- BC Natural Resources Forum – Prince George, January 18 -20, 2016
- Induced Seismicity meeting – Victoria, January 21, 2016
- Roundup – Vancouver, January 25 – 28, 2016
- Induced seismicity reveal meeting – CAPP - Calgary, February 25, 2016
- CSPG conference – Calgary, March 7-9, 2016

For Additional Information

Please contact Carlos Salas at Geoscience BC

Suite 1101- 750 West Pender Street

Vancouver, BC Canada V6C 2T7

604-662-4147 ext. 28

Appendix A: Earthquakes recorded April 2013 to January 2016

Date	Time_UT_	Latitude	Longitude	Depth	Mag	Region	
01/01/2016	18:06:26	56.491	-122.344	1.0g	1.9	95	km W of Fort St. John
01/01/2016	17:01:46	56.505	-122.429	1.0g	2.0	101	km W of Fort St. John
01/01/2016	12:05:42	56.306	-121.878	1.0g	2.0	63	km W of Fort St. John
01/01/2016	0:37:53	56.434	-121.861	16.0*	2.5	65	km W of Fort St. John
29/12/2015	7:17:38	56.979	-122.193	10.7*	2.4	115	km WNW of Fort St. John
29/12/2015	0:33:20	57.015	-122.202	5.0g	1.9	118	km WNW of Fort St. John
28/12/2015	3:38:23	56.541	-121.607	10.0g	2.0	56	km WNW of Fort St. John
26/12/2015	12:53:52	57.036	-122.259	7.4*	1.9	122	km WNW of Fort St. John
24/12/2015	2:18:01	56.138	-122.388	10.0g	1.5	96	km W of Fort St. John
17/12/2015	20:19:48	57.047	-121.932	1.0g	2.2	110	km NW of Fort St. John
13/12/2015	20:30:57	57.048	-122.267	1.0g	1.9	124	km WNW of Fort St. John
13/12/2015	18:27:43	56.527	-122.409	13.4*	2.3	100	km W of Fort St. John
11/12/2015	16:58:29	56.45	-121.384	18.5*	1.5	39	km WNW of Fort St. John
11/12/2015	3:03:47	57.294	-122.118	10.0*	2.0	139	km NW of Fort St. John
29/11/2015	16:20:53	56.035	-120.874	5.0g	3.9	23	km S of Fort St. John
23/11/2015	21:29:48	56.198	-121.851	1.0g	2.3	62	km W of Fort St. John
22/11/2015	8:07:20	56.218	-122.09	10.0g	2.3	76	km W of Fort St. John
21/11/2015	17:57:30	57.038	-122.225	10.0g	3.4	121	km WNW of Fort St. John
19/11/2015	3:10:53	57.059	-122.391	5.0g	1.9	130	km WNW of Fort St. John
18/11/2015	11:54:06	57.066	-122.281	5.0g	1.9	126	km WNW of Fort St. John
18/11/2015	3:26:08	56.063	-121.12	10.0g	2.8	26	km SW of Fort St. John
17/11/2015	15:42:49	57.063	-122.28	1.0g	2.3	125	km WNW of Fort St. John
17/11/2015	10:13:10	57.057	-122.288	10.0g	2.4	125	km WNW of Fort St. John
17/11/2015	6:33:58	57.073	-122.216	1.0g	2.0	123	km WNW of Fort St. John
15/11/2015	5:43:27	55.927	-120.428	13.0*	2.5	21	km NW of Dawson Creek
12/11/2015	19:05:30	55.936	-120.018	1.0g	2.2	23	km NE of Dawson Creek
12/11/2015	16:21:57	56.335	-121.916	1.0g	1.6	66	km W of Fort St. John
12/11/2015	2:01:23	56.288	-121.781	5.0g	2.0	57	km W of Fort St. John
10/11/2015	10:23:06	56.558	-122.135	15.0g	1.7	86	km WNW of Fort St. John
09/11/2015	11:58:00	56.586	-122.386	10.0g	2.0	101	km WNW of Fort St. John
05/11/2015	14:37:13	56.822	-122.156	5.0g	2.5	102	km WNW of Fort St. John
05/11/2015	11:12:47	56.754	-122.062	20.0g	2.0	93	km WNW of Fort St. John
03/11/2015	22:26:14	56.744	-122.126	5.0g	2.2	95	km WNW of Fort St. John
03/11/2015	12:41:05	57.233	-122.471	5.0g	3.6	147	km WNW of Fort St. John
03/11/2015	10:09:33	56.029	-120.998	10.0g	2.6	26	km SW of Fort St. John
03/11/2015	9:59:42	57.218	-122.511	1.0g	2.1	147	km WNW of Fort St. John
31/10/2015	10:49:10	57.229	-122.472	1.0g	2.2	147	km WNW of Fort St. John
27/10/2015	17:21:15	57.018	-122.189	10.0g	1.7	118	km WNW of Fort St. John
26/10/2015	15:12:30	56.914	-121.948	5.0g	2.4	100	km WNW of Fort St. John

Date	Time_UT_	Latitude	Longitude	Depth	Mag	Region		
23/10/2015	17:28:39	56.933	-121.998	10.0g	1.8	103	km	WNW of Fort St. John
23/10/2015	17:05:10	56.338	-122.018	5.0g	1.7	72	km	W of Fort St. John
23/10/2015	15:00:31	56.085	-121.034	5.0g	1.8	21	km	SW of Fort St. John
23/10/2015	13:22:23	56.338	-121.998	5.0g	2.0	71	km	W of Fort St. John
23/10/2015	12:12:37	56.298	-121.928	10.0g	2.2	66	km	W of Fort St. John
22/10/2015	4:20:56	56.523	-122.3	20.0g	2.5	94	km	W of Fort St. John
15/10/2015	19:32:46	56.938	-122.145	10.0g	2.1	110	km	WNW of Fort St. John
15/10/2015	12:35:56	56.619	-122.398	5.8*	2.6	103	km	WNW of Fort St. John
13/10/2015	0:25:54	57.198	-122.052	5.0g	2.0	128	km	NW of Fort St. John
12/10/2015	11:22:46	57.002	-122.222	11.1*	2.3	118	km	WNW of Fort St. John
08/10/2015	15:08:51	57.204	-122	6.4*	1.8	127	km	NW of Fort St. John
08/10/2015	13:10:37	56.555	-122.326	1.9*	1.6	97	km	WNW of Fort St. John
07/10/2015	3:44:04	56.101	-121.087	10.0g	1.9	22	km	WSW of Fort St. John
06/10/2015	12:09:19	56.114	-121.118	5.7*	1.4	22	km	WSW of Fort St. John
06/10/2015	2:09:18	57.298	-122.557	10.0g	1.7	156	km	WNW of Fort St. John
05/10/2015	10:04:15	56.54	-122.394	10.0g	1.8	100	km	W of Fort St. John
05/10/2015	4:21:16	57.304	-122.606	10.0g	1.9	158	km	WNW of Fort St. John
04/10/2015	13:14:28	56.4	-121.652	12.4*	1.8	52	km	W of Fort St. John
03/10/2015	23:22:49	56.11	-121.113	6.1*	2.2	22	km	WSW of Fort St. John
03/10/2015	21:39:27	56.105	-121.118	11.0*	2.0	23	km	WSW of Fort St. John
03/10/2015	0:37:51	56.124	-121.064	7.3*	1.9	19	km	WSW of Fort St. John
02/10/2015	23:44:44	56.121	-121.088	5.0g	1.7	20	km	WSW of Fort St. John
02/10/2015	23:27:33	56.111	-121.096	10.0g	2.2	21	km	WSW of Fort St. John
02/10/2015	22:45:48	56.112	-121.095	5.0g	2.2	21	km	WSW of Fort St. John
01/10/2015	19:27:42	56.318	-121.866	5.0g	1.5	63	km	W of Fort St. John
30/09/2015	18:34:31	56.946	-122.064	5.0g	2.5	107	km	WNW of Fort St. John
30/09/2015	18:32:49	56.907	-122.228	5.0g	2.1	111	km	WNW of Fort St. John
30/09/2015	11:39:30	55.941	-120.275	3.7*	2.1	19	km	NNW of Dawson Creek
30/09/2015	9:27:19	55.947	-120.243	2.3*	2.1	19	km	N of Dawson Creek
29/09/2015	22:19:02	56.929	-122.083	8.5*	1.8	106	km	WNW of Fort St. John
29/09/2015	21:35:01	56.946	-122.078	5.3*	1.7	108	km	WNW of Fort St. John
29/09/2015	6:36:41	55.962	-120.283	4.3*	1.7	21	km	NNW of Dawson Creek
29/09/2015	5:18:22	55.942	-120.288	1.0g	2.1	19	km	NNW of Dawson Creek
28/09/2015	13:17:19	55.943	-120.24	1.0g	1.3	19	km	N of Dawson Creek
28/09/2015	11:44:44	57.029	-122.179	2.7*	1.9	118	km	WNW of Fort St. John
28/09/2015	7:23:08	57.303	-122.618	7.8*	1.3	159	km	WNW of Fort St. John
28/09/2015	1:58:23	57.304	-122.438	7.5*	2.0	152	km	WNW of Fort St. John
28/09/2015	0:31:32	55.948	-120.281	7.3*	1.9	20	km	NNW of Dawson Creek
27/09/2015	21:01:53	55.939	-120.218	4.9*	2.2	19	km	N of Dawson Creek
27/09/2015	16:24:54	55.946	-120.29	6.7*	2.4	20	km	NNW of Dawson Creek
27/09/2015	15:44:48	55.938	-120.386	9.5*	2.4	21	km	NW of Dawson Creek
26/09/2015	8:55:16	57.011	-122.289	10.0g	3.0	122	km	WNW of Fort St. John

Date	Time_UT_	Latitude	Longitude	Depth	Mag	Region	
25/09/2015	3:49:05	55.929	-120.266	7.8*	1.8	18	km NNW of Dawson Creek
25/09/2015	2:59:31	56.302	-121.851	11.1*	2.3	62	km W of Fort St. John
25/09/2015	2:12:19	55.944	-120.236	4.9*	2.1	19	km N of Dawson Creek
25/09/2015	0:12:06	55.936	-120.258	7.4*	2.1	18	km N of Dawson Creek
24/09/2015	22:47:16	57.297	-122.473	8.7*	2.5	152	km WNW of Fort St. John
24/09/2015	20:21:59	55.94	-120.237	5.0g	1.4	19	km N of Dawson Creek
24/09/2015	19:41:29	55.94	-120.267	4.2*	2.0	19	km NNW of Dawson Creek
24/09/2015	15:45:36	57.24	-122.037	1.0g	2.5	131	km NW of Fort St. John
24/09/2015	8:10:13	57.299	-122.49	1.0g	2.2	153	km WNW of Fort St. John
24/09/2015	8:08:59	57.3	-122.494	1.0g	1.5	154	km WNW of Fort St. John
24/09/2015	2:20:58	57.309	-122.46	1.0g	1.3	153	km WNW of Fort St. John
24/09/2015	0:18:58	56.57	-122.384	5.0g	1.9	100	km WNW of Fort St. John
23/09/2015	9:57:00	57.197	-122.176	17.7*	1.6	132	km NW of Fort St. John
22/09/2015	2:01:08	57.254	-121.996	9.0*	1.8	131	km NW of Fort St. John
20/09/2015	13:32:46	57.203	-122.005	2.0*	1.6	127	km NW of Fort St. John
18/09/2015	4:46:47	57.173	-122.034	10.1*	1.8	125	km NW of Fort St. John
17/09/2015	14:08:29	57.199	-122.126	14.1*	1.3	131	km NW of Fort St. John
16/09/2015	17:13:10	57.201	-122.044	8.1*	2.5	128	km NW of Fort St. John
16/09/2015	13:05:40	57.206	-122.103	12.9*	2.1	131	km NW of Fort St. John
16/09/2015	3:12:39	56.75	-122.418	18.2*	2.1	111	km WNW of Fort St. John
16/09/2015	2:59:27	57.198	-122.012	10.6*	3.0	127	km NW of Fort St. John
16/09/2015	2:50:49	57.204	-122.096	14.7*	1.6	130	km NW of Fort St. John
15/09/2015	14:14:21	57.173	-122.256	20.0g	1.7	133	km WNW of Fort St. John
15/09/2015	12:12:26	57.221	-122.036	7.6*	2.6	130	km NW of Fort St. John
15/09/2015	10:46:10	57.179	-122.223	20.0g	1.8	133	km NW of Fort St. John
15/09/2015	4:06:46	57.142	-122.627	7.8*	1.7	147	km WNW of Fort St. John
10/09/2015	9:00:53	56.749	-122.344	20.0g	1.8	107	km WNW of Fort St. John
09/09/2015	14:58:56	56.764	-122.14	15.0g	2.2	97	km WNW of Fort St. John
07/09/2015	20:33:43	56.776	-122.135	15.0g	2.1	98	km WNW of Fort St. John
07/09/2015	18:18:28	56.749	-122.001	15.0g	1.7	89	km WNW of Fort St. John
06/09/2015	4:36:04	56.431	-121.824	10.0g	1.8	63	km W of Fort St. John
04/09/2015	4:04:40	57.003	-122.316	5.0g	1.5	122	km WNW of Fort St. John
03/09/2015	21:31:50	56.631	-122.396	10.0g	1.8	104	km WNW of Fort St. John
03/09/2015	5:34:41	57.017	-122.375	10.0g	2.0	126	km WNW of Fort St. John
03/09/2015	5:30:04	57.026	-122.311	10.0g	1.4	124	km WNW of Fort St. John
03/09/2015	5:24:43	57.497	-122.962	5.0g	2.2	147	km S of Fort Nelson
02/09/2015	18:21:08	57.019	-122.259	10.0g	1.5	121	km WNW of Fort St. John
02/09/2015	13:13:36	57.026	-122.269	1.0g	1.7	122	km WNW of Fort St. John
02/09/2015	7:46:25	57.014	-122.388	10.0g	1.9	126	km WNW of Fort St. John
02/09/2015	7:42:34	57.014	-122.122	5.0g	3.5	115	km WNW of Fort St. John
02/09/2015	7:34:17	57.005	-122.367	10.0g	2.8	125	km WNW of Fort St. John
02/09/2015	7:33:43	57.012	-122.211	10.0g	2.5	118	km WNW of Fort St. John

Date	Time_UT_	Latitude	Longitude	Depth	Mag	Region		
02/09/2015	7:28:11	57.024	-122.332	10.0g	2.4	125	km	WNW of Fort St. John
02/09/2015	7:27:31	57.038	-122.184	5.0g	1.8	119	km	WNW of Fort St. John
02/09/2015	4:49:21	57.012	-122.325	10.0g	1.6	123	km	WNW of Fort St. John
02/09/2015	2:10:54	57.007	-122.327	5.0g	1.4	123	km	WNW of Fort St. John
28/08/2015	3:52:18	56.605	-122.316	12.1*	3.3	98	km	WNW of Fort St. John
23/08/2015	1:50:05	56.998	-122.184	5.0g	1.9	116	km	WNW of Fort St. John
20/08/2015	4:57:54	56.367	-122.63	20.0g	1.2	110	km	W of Fort St. John
17/08/2015	23:42:41	56.99	-122.174	5.0g	2.9	115	km	WNW of Fort St. John
17/08/2015	22:04:45	56.974	-122.199	15.0g	1.6	115	km	WNW of Fort St. John
17/08/2015	21:00:13	56.969	-122.259	15.0g	1.5	117	km	WNW of Fort St. John
17/08/2015	20:34:11	56.998	-122.329	20.0g	1.4	123	km	WNW of Fort St. John
17/08/2015	20:15:00	57.013	-122.154	5.0g	4.6	116	km	WNW of Fort St. John
17/08/2015	15:34:29	56.667	-122.081	10.0g	1.4	88	km	WNW of Fort St. John
17/08/2015	8:29:47	56.712	-121.843	15.0g	1.4	79	km	WNW of Fort St. John
15/08/2015	17:17:45	57.308	-122.724	8.2*	1.6	164	km	WNW of Fort St. John
12/08/2015	14:32:11	56.103	-122.183	21.3*	1.6	84	km	W of Fort St. John
08/08/2015	3:42:24	56.385	-121.868	13.8*	1.3	64	km	W of Fort St. John
08/08/2015	2:34:15	56.226	-122.096	5.0g	1.7	77	km	W of Fort St. John
04/08/2015	13:27:48	56.548	-122.4	10.0g	2.1	101	km	W of Fort St. John
31/07/2015	19:35:52	57.135	-122.861	13.2*	1.6	157	km	WNW of Fort St. John
29/07/2015	5:37:16	56.344	-121.92	1.0g	1.5	66	km	W of Fort St. John
28/07/2015	3:14:09	55.922	-120.76	5.0g	1.3	36	km	SSE of Fort St. John
24/07/2015	6:16:43	56.569	-122.409	9.5*	2.3	102	km	WNW of Fort St. John
16/07/2015	13:25:03	56.535	-120.716	5.0g	2.2	32	km	NNE of Fort St. John
08/07/2015	23:02:09	55.883	-120.238	5.0g	2.4	12	km	N of Dawson Creek
08/07/2015	10:48:39	55.891	-120.348	5.0g	2.6	15	km	NW of Dawson Creek
08/07/2015	8:19:34	55.916	-120.336	1.0g	2.6	17	km	NW of Dawson Creek
25/05/2015	13:54:34	56.999	-121.958	10.0g	1.4	107	km	NW of Fort St. John
19/05/2015	10:12:53	55.958	-120.408	1.0g	1.2	23	km	NW of Dawson Creek
19/05/2015	6:38:29	56.866	-121.736	10.0g	1.2	87	km	NW of Fort St. John
18/05/2015	1:13:42	56.29	-121.947	5.0g	1.2	67	km	W of Fort St. John
11/05/2015	23:24:02	56.651	-122.105	1.0g	1.6	89	km	WNW of Fort St. John
10/05/2015	11:47:01	56.456	-121.844	5.0g	2.2	65	km	WNW of Fort St. John
10/05/2015	6:48:38	56.397	-121.845	5.0g	2.1	63	km	W of Fort St. John
06/05/2015	20:28:32	56.304	-121.951	20.0g	1.4	68	km	W of Fort St. John
06/05/2015	20:27:59	56.329	-121.918	10.0g	1.3	66	km	W of Fort St. John
06/05/2015	20:10:29	56.334	-121.915	1.0g	1.4	66	km	W of Fort St. John
05/05/2015	22:39:41	56.413	-121.854	1.0g	2.0	64	km	W of Fort St. John
02/05/2015	15:43:30	56.32	-121.853	5.0g	2.0	62	km	W of Fort St. John
27/04/2015	11:31:52	56.628	-122.126	10.0g	1.8	89	km	WNW of Fort St. John
27/04/2015	9:49:51	56.631	-122.333	10.0g	1.9	100	km	WNW of Fort St. John
27/04/2015	9:01:59	56.633	-122.24	10.0g	1.4	95	km	WNW of Fort St. John

Date	Time_UT_	Latitude	Longitude	Depth	Mag	Region	
23/04/2015	5:58:07	56.297	-121.901	11.1*	1.5	65	km W of Fort St. John
23/04/2015	5:12:43	56.286	-121.956	17.6*	1.3	68	km W of Fort St. John
21/04/2015	21:19:53	56.605	-122.264	1.0g	1.4	95	km WNW of Fort St. John
21/04/2015	9:20:15	56.443	-121.803	10.0g	1.3	62	km WNW of Fort St. John
06/04/2015	2:34:56	56.886	-122.212	5.0g	3.0	109	km WNW of Fort St. John
05/04/2015	17:54:39	56.064	-121.07	5.0g	2.2	24	km SW of Fort St. John
04/04/2015	3:28:48	56.452	-121.8	5.8*	2.1	62	km WNW of Fort St. John
29/03/2015	12:14:31	56.962	-122.167	5.0g	1.7	113	km WNW of Fort St. John
29/03/2015	0:41:39	56.854	-121.992	5.0g	1.9	97	km WNW of Fort St. John
26/03/2015	22:55:15	56.328	-122.062	5.0g	1.7	75	km W of Fort St. John
26/03/2015	16:42:37	56.684	-122.063	10.0g	1.9	88	km WNW of Fort St. John
21/03/2015	15:49:20	56.215	-122.128	8.7*	3.0	79	km W of Fort St. John
19/03/2015	8:40:39	56.29	-121.933	10.0g	2.0	67	km W of Fort St. John
16/03/2015	3:08:50	56.948	-122.163	10.0g	1.9	111	km WNW of Fort St. John
15/03/2015	20:32:21	56.962	-122.173	1.0g	2.0	113	km WNW of Fort St. John
15/03/2015	1:12:02	56.946	-122.179	5.0g	1.9	112	km WNW of Fort St. John
12/03/2015	11:53:08	56.767	-121.777	8.4*	2.2	80	km WNW of Fort St. John
10/03/2015	20:07:42	56.445	-121.851	13.2*	1.9	65	km W of Fort St. John
10/03/2015	18:42:34	56.318	-121.921	5.0g	2.0	66	km W of Fort St. John
08/03/2015	17:23:55	57.244	-122.1	5.0g	2.4	134	km NW of Fort St. John
07/03/2015	3:36:51	56.312	-121.934	14.1*	1.8	67	km W of Fort St. John
03/03/2015	2:45:03	56.547	-122.414	14.4*	1.9	101	km W of Fort St. John
01/03/2015	13:59:56	57.264	-122.56	5.0g	1.4	153	km WNW of Fort St. John
01/03/2015	11:30:44	56.966	-122.09	10.0g	3.1	110	km WNW of Fort St. John
27/02/2015	7:39:12	56.298	-121.909	11.5*	2.2	65	km W of Fort St. John
26/02/2015	16:43:57	56.303	-121.91	4.5*	2.6	65	km W of Fort St. John
22/02/2015	13:21:31	56.487	-122.26	10.0g	1.8	90	km W of Fort St. John
20/02/2015	7:43:14	56.928	-122.178	5.0g	2.6	111	km WNW of Fort St. John
19/02/2015	7:12:13	57.233	-122.64	1.0g	1.6	154	km WNW of Fort St. John
17/02/2015	11:44:54	56.152	-122.148	30.4*	0.6	81	km W of Fort St. John
15/02/2015	3:58:21	57.16	-122.508	10.0g	2.0	143	km WNW of Fort St. John
12/02/2015	19:03:39	56.312	-122.073	10.0g	1.7	75	km W of Fort St. John
12/02/2015	13:34:51	56.307	-121.821	1.0g	1.8	60	km W of Fort St. John
12/02/2015	5:16:30	57.348	-122.407	1.0g	1.5	154	km NW of Fort St. John
11/02/2015	16:18:26	57.353	-122.455	7.4*	1.9	157	km NW of Fort St. John
09/02/2015	22:47:27	56.969	-122.313	9.2*	1.8	120	km WNW of Fort St. John
09/02/2015	22:20:59	56.87	-122.201	5.9*	2.1	107	km WNW of Fort St. John
09/02/2015	22:19:42	56.902	-122.229	2.7*	2.4	111	km WNW of Fort St. John
09/02/2015	2:23:27	56.875	-122.205	5.0g	1.7	108	km WNW of Fort St. John
08/02/2015	21:40:15	57.255	-122.476	1.0g	1.5	149	km WNW of Fort St. John
08/02/2015	16:09:19	57.228	-122.649	1.0g	1.9	154	km WNW of Fort St. John
08/02/2015	15:32:06	57.346	-122.44	5.0g	1.7	155	km NW of Fort St. John

Date	Time_UT_	Latitude	Longitude	Depth	Mag	Region	
08/02/2015	10:21:05	56.103	-120.019	1.0g	2.6	39	km NNE of Dawson Creek
08/02/2015	2:58:41	57.348	-122.436	1.0g	1.9	155	km NW of Fort St. John
06/02/2015	23:28:56	56.867	-122.368	5.0g	2.4	115	km WNW of Fort St. John
05/02/2015	13:27:58	56.867	-122.783	20.0g	1.9	137	km WNW of Fort St. John
05/02/2015	6:41:00	56.309	-121.936	12.0*	2.1	67	km W of Fort St. John
02/02/2015	3:59:39	56.038	-122.624	30.6*	1.9	112	km W of Fort St. John
01/02/2015	4:27:31	57.313	-122.665	10.1*	1.7	162	km WNW of Fort St. John
29/01/2015	21:33:47	57.262	-122.549	4.6*	2.0	153	km WNW of Fort St. John
21/01/2015	16:14:19	57.266	-122.597	7.0*	1.9	155	km WNW of Fort St. John
21/01/2015	0:51:28	57.253	-122.577	10.5*	1.9	153	km WNW of Fort St. John
20/01/2015	15:20:10	57.321	-122.575	7.5*	1.6	158	km WNW of Fort St. John
18/01/2015	23:33:20	57.303	-122.656	5.0g	1.8	160	km WNW of Fort St. John
18/01/2015	5:50:41	57.267	-122.474	5.0g	2.3	150	km WNW of Fort St. John
16/01/2015	0:56:49	57.277	-122.5	5.0g	1.9	152	km WNW of Fort St. John
15/01/2015	23:47:18	57.255	-122.586	5.0g	2.1	154	km WNW of Fort St. John
15/01/2015	7:18:36	56.422	-121.822	10.0g	2.2	62	km W of Fort St. John
15/01/2015	6:42:01	57.269	-122.58	10.0g	1.9	154	km WNW of Fort St. John
15/01/2015	6:22:10	57.263	-122.484	5.0g	1.7	150	km WNW of Fort St. John
15/01/2015	6:13:04	57.261	-122.533	5.0g	2.8	152	km WNW of Fort St. John
14/01/2015	2:25:49	56.47	-122.297	5.0g	2.4	92	km W of Fort St. John
11/01/2015	2:24:08	56.544	-121.885	10.0g	1.9	71	km WNW of Fort St. John
08/01/2015	1:35:27	56.591	-122.368	5.0g	1.6	100	km WNW of Fort St. John
05/01/2015	2:10:58	56.325	-121.918	10.0g	2.2	66	km W of Fort St. John
02/01/2015	1:15:38	56.305	-122.122	20.0g	2.3	78	km W of Fort St. John
29/12/2014	15:03:13	56.335	-121.905	5.0g	3.3	65	km W of Fort St. John
27/12/2014	10:28:58	56.335	-121.843	5.9*	2.4	62	km W of Fort St. John
26/12/2014	5:03:29	56.357	-121.882	0.0*	2.2	64	km W of Fort St. John
23/12/2014	19:05:57	56.32	-121.949	5.0g	1.5	68	km W of Fort St. John
21/12/2014	0:18:36	56.533	-122.242	5.0g	3.1	91	km WNW of Fort St. John
20/12/2014	13:05:30	56.3	-121.905	20.0g	2.4	65	km W of Fort St. John
18/12/2014	11:57:50	56.298	-121.962	15.0g	2.0	68	km W of Fort St. John
18/12/2014	5:25:38	56.495	-122.19	10.0g	2.0	87	km W of Fort St. John
17/12/2014	16:34:30	56.313	-121.858	5.0g	2.2	62	km W of Fort St. John
17/12/2014	10:01:48	56.344	-121.89	7.9*	3.5	65	km W of Fort St. John
16/12/2014	10:43:43	56.476	-122.412	13.9*	2.0	99	km W of Fort St. John
16/12/2014	10:24:47	56.485	-122.289	0.0g	2.0	92	km W of Fort St. John
16/12/2014	8:44:27	56.47	-122.384	11.8*	2.1	97	km W of Fort St. John
13/12/2014	16:27:04	57.303	-122.579	1.0g	1.5	157	km WNW of Fort St. John
13/12/2014	14:04:07	57.128	-122.282	1.0g	1.7	131	km WNW of Fort St. John
13/12/2014	8:28:13	57.305	-122.493	5.0g	1.6	154	km WNW of Fort St. John
11/12/2014	16:57:32	55.865	-120.161	10.0g	2.5	11	km NE of Dawson Creek
11/12/2014	10:46:25	56.3	-121.979	15.0g	1.9	70	km W of Fort St. John

Date	Time_UT_	Latitude	Longitude	Depth	Mag	Region	
08/12/2014	10:02:18	57.282	-122.597	5.0g	2.2	156	km WNW of Fort St. John
07/12/2014	18:55:20	56.317	-121.903	5.0g	2.5	65	km W of Fort St. John
06/12/2014	17:04:43	56.555	-122.341	10.0g	2.1	97	km WNW of Fort St. John
06/12/2014	9:25:51	57.295	-122.584	5.0g	2.1	157	km WNW of Fort St. John
05/12/2014	20:18:11	57.181	-122.458	5.0g	2.2	142	km WNW of Fort St. John
02/12/2014	18:59:29	56.77	-121.516	5.0g	2.0	70	km NW of Fort St. John
02/12/2014	18:49:16	56.768	-121.554	10.0g	2.0	72	km NW of Fort St. John
02/12/2014	18:36:40	56.766	-121.498	10.0g	2.1	69	km NW of Fort St. John
02/12/2014	11:17:21	56.492	-122.284	10.0g	2.0	92	km W of Fort St. John
01/12/2014	19:55:34	57.245	-122.674	5.0g	2.0	157	km WNW of Fort St. John
01/12/2014	8:22:37	56.721	-121.321	10.0g	1.8	59	km NW of Fort St. John
26/11/2014	17:19:24	57.282	-122.753	5.0g	1.9	163	km WNW of Fort St. John
25/11/2014	2:21:19	56.554	-122.444	10.0g	2.3	103	km W of Fort St. John
24/11/2014	21:30:18	57.287	-122.778	5.0g	1.9	164	km WNW of Fort St. John
24/11/2014	10:02:46	56.568	-122.376	10.0g	2.9	100	km WNW of Fort St. John
23/11/2014	1:34:03	56.331	-121.873	10.0g	2.8	63	km W of Fort St. John
22/11/2014	21:52:04	56.281	-121.909	5.0g	0.0	65	km W of Fort St. John
22/11/2014	2:50:31	57.24	-122.544	6.0*	2.6	151	km WNW of Fort St. John
01/11/2014	20:26:22	56.987	-122.104	12.9*	2.1	112	km WNW of Fort St. John
01/11/2014	6:07:32	56.947	-122.152	11.8*	2.1	111	km WNW of Fort St. John
31/10/2014	20:07:56	57.291	-122.281	5.6*	1.9	145	km NW of Fort St. John
31/10/2014	9:23:36	56.963	-122.143	11.4*	2.5	112	km WNW of Fort St. John
31/10/2014	2:12:18	57.26	-122.583	11.5*	2.6	154	km WNW of Fort St. John
22/10/2014	2:35:20	56.583	-122.334	1.0g	2.4	98	km WNW of Fort St. John
21/10/2014	5:57:59	56.598	-122.338	10.0g	2.7	99	km WNW of Fort St. John
21/10/2014	5:06:42	56.477	-122.349	10.0g	1.1	95	km W of Fort St. John
19/10/2014	11:05:54	57.139	-122.43	16.8*	1.7	138	km WNW of Fort St. John
19/10/2014	9:42:49	56.303	-121.833	12.5*	2.2	61	km W of Fort St. John
15/10/2014	15:30:17	56.314	-121.925	9.3*	1.6	66	km W of Fort St. John
14/10/2014	0:22:54	56.482	-122.243	15.0*	1.9	89	km W of Fort St. John
10/10/2014	16:54:08	56.051	-120.769	10.0g	1.8	22	km SSE of Fort St. John
10/10/2014	1:56:25	56.433	-121.969	10.0g	1.8	71	km W of Fort St. John
09/10/2014	10:59:55	56.464	-122.419	10.0g	1.7	99	km W of Fort St. John
08/10/2014	6:32:37	56.473	-122.336	10.0g	1.8	94	km W of Fort St. John
07/10/2014	10:25:58	57.03	-122.171	10.0g	1.6	118	km WNW of Fort St. John
06/10/2014	2:01:32	57.02	-122.272	10.0g	1.7	122	km WNW of Fort St. John
05/10/2014	23:53:00	56.398	-121.881	10.0g	1.7	65	km W of Fort St. John
04/10/2014	16:59:57	56.985	-122.254	10.5*	2.6	118	km WNW of Fort St. John
04/10/2014	6:52:44	57.236	-122.648	9.1*	2.0	155	km WNW of Fort St. John
02/10/2014	1:34:06	55.895	-120.271	5.0g	2.7	14	km NNW of Dawson Creek
01/10/2014	11:28:02	55.873	-120.277	10.0g	2.2	12	km NNW of Dawson Creek
27/09/2014	23:30:10	56.519	-122.339	10.0g	2.3	96	km W of Fort St. John

Date	Time_UT_	Latitude	Longitude	Depth	Mag	Region	
26/09/2014	20:10:51	56.48	-122.424	5.0g	2.0	100	km W of Fort St. John
26/09/2014	16:42:24	56.514	-122.27	1.0g	2.9	92	km W of Fort St. John
20/09/2014	17:35:34	56.053	-120.483	10.0g	1.8	31	km ESE of Fort St. John
19/09/2014	23:09:04	57.343	-122.549	5.0g	2.1	159	km WNW of Fort St. John
19/09/2014	13:06:33	57.339	-122.532	10.0g	1.5	158	km WNW of Fort St. John
18/09/2014	12:49:40	56.317	-122.065	5.0g	1.5	75	km W of Fort St. John
16/09/2014	10:20:52	56.015	-120.583	16.1*	2.3	30	km SE of Fort St. John
11/09/2014	8:04:34	56.071	-120.566	5.0g	1.5	26	km ESE of Fort St. John
10/09/2014	23:00:35	56.055	-120.534	10.0g	1.9	29	km ESE of Fort St. John
10/09/2014	4:49:02	56.069	-120.566	5.0g	1.6	26	km ESE of Fort St. John
07/09/2014	11:32:15	57.194	-122.527	10.0g	2.5	146	km WNW of Fort St. John
03/09/2014	20:01:34	56.598	-122.371	5.0g	2.8	101	km WNW of Fort St. John
27/08/2014	5:59:46	57.156	-122.512	10.0g	1.2	143	km WNW of Fort St. John
27/08/2014	5:55:07	57.159	-122.499	10.0g	1.2	142	km WNW of Fort St. John
26/08/2014	18:52:38	57.163	-122.445	10.0g	1.3	140	km WNW of Fort St. John
26/08/2014	1:35:21	56.759	-121.888	5.0g	1.7	85	km WNW of Fort St. John
25/08/2014	10:26:37	57.158	-122.454	5.0g	2.0	140	km WNW of Fort St. John
24/08/2014	15:14:59	56.773	-121.949	5.0g	1.9	89	km WNW of Fort St. John
24/08/2014	8:41:13	56.772	-121.994	5.0g	1.1	91	km WNW of Fort St. John
24/08/2014	4:35:32	57.16	-122.43	5.0g	1.3	139	km WNW of Fort St. John
24/08/2014	1:14:54	57.24	-122.814	5.0g	1.5	162	km WNW of Fort St. John
24/08/2014	0:33:23	56.306	-121.788	5.0g	1.6	58	km W of Fort St. John
23/08/2014	21:53:38	56.79	-121.977	6.5*	2.3	91	km WNW of Fort St. John
23/08/2014	21:13:45	56.797	-122.055	5.0g	2.5	95	km WNW of Fort St. John
23/08/2014	13:56:05	56.753	-122.015	12.2*	1.9	90	km WNW of Fort St. John
22/08/2014	19:19:19	57.255	-122.79	5.0g	2.0	162	km WNW of Fort St. John
21/08/2014	4:54:41	57.054	-122.213	5.0g	1.4	122	km WNW of Fort St. John
19/08/2014	11:12:32	57.263	-122.15	13.8*	1.9	137	km NW of Fort St. John
13/08/2014	11:59:20	56.327	-121.898	1.0g	1.7	65	km W of Fort St. John
12/08/2014	20:11:02	56.542	-122.431	5.0g	2.5	102	km W of Fort St. John
11/08/2014	3:25:19	57.053	-122.377	10.0g	1.8	129	km WNW of Fort St. John
10/08/2014	6:21:32	56.361	-122.325	10.0g	1.5	91	km W of Fort St. John
08/08/2014	21:54:55	57.489	-122.792	10.0g	2.7	147	km S of Fort Nelson
05/08/2014	3:22:55	56.422	-121.892	10.0g	1.4	67	km W of Fort St. John
04/08/2014	17:17:24	57.564	-122.942	5.0g	4.4	140	km S of Fort Nelson
01/08/2014	23:44:53	56.553	-122.144	5.0g	1.5	86	km WNW of Fort St. John
30/07/2014	21:23:56	57.542	-122.894	6.2*	3.8	142	km S of Fort Nelson
30/07/2014	7:54:55	56.931	-122.049	5.0g	1.9	105	km WNW of Fort St. John
29/07/2014	23:45:25	57.481	-122.794	1.8*	1.7	148	km S of Fort Nelson
29/07/2014	20:31:49	56.52	-122.13	5.0g	2.0	84	km WNW of Fort St. John
29/07/2014	13:06:12	56.933	-122.047	5.0g	1.8	105	km WNW of Fort St. John
29/07/2014	10:27:53	56.938	-122.102	9.3*	1.7	108	km WNW of Fort St. John

Date	Time_UT_	Latitude	Longitude	Depth	Mag	Region	
29/07/2014	9:54:12	56.919	-122.118	12.6*	2.2	107	km WNW of Fort St. John
29/07/2014	6:57:31	57.048	-122.246	10.9*	1.7	123	km WNW of Fort St. John
28/07/2014	17:42:10	56.918	-121.928	5.0g	1.8	99	km WNW of Fort St. John
26/07/2014	14:00:17	57.046	-122.232	5.0g	2.3	122	km WNW of Fort St. John
20/07/2014	4:52:52	57.044	-122.216	5.0g	2.2	121	km WNW of Fort St. John
19/07/2014	13:05:36	57.041	-122.254	5.0g	1.7	123	km WNW of Fort St. John
18/07/2014	19:30:38	57.044	-122.264	5.0g	1.7	123	km WNW of Fort St. John
17/07/2014	9:07:31	57.017	-122.116	10.0g	2.5	115	km WNW of Fort St. John
16/07/2014	17:44:06	57.268	-122.727	1.0g	3.7	161	km WNW of Fort St. John
15/07/2014	6:44:51	57.052	-122.45	5.0g	1.3	132	km WNW of Fort St. John
15/07/2014	0:26:23	57.234	-122.714	5.0g	2.4	157	km WNW of Fort St. John
15/07/2014	0:12:35	57.228	-122.836	10.0g	1.5	162	km WNW of Fort St. John
14/07/2014	18:31:53	57.069	-122.321	10.0g	1.4	128	km WNW of Fort St. John
14/07/2014	17:34:57	57.059	-122.406	10.0g	1.3	131	km WNW of Fort St. John
14/07/2014	7:46:06	56.468	-122.425	5.0g	1.3	100	km W of Fort St. John
14/07/2014	7:12:37	57.23	-122.764	5.0g	0.9	159	km WNW of Fort St. John
14/07/2014	6:37:20	57.23	-122.727	5.0g	1.6	158	km WNW of Fort St. John
11/07/2014	22:18:17	57.207	-122.576	5.0g	1.6	149	km WNW of Fort St. John
10/07/2014	8:22:26	56.589	-122.129	5.0g	1.3	87	km WNW of Fort St. John
08/07/2014	23:12:51	56.437	-122.026	10.0g	1.6	75	km W of Fort St. John
08/07/2014	13:19:23	57.42	-122.611	10.0g	1.4	155	km S of Fort Nelson
07/07/2014	22:33:10	56.431	-122.492	15.0g	1.0	103	km W of Fort St. John
03/07/2014	6:10:22	56.233	-121.972	10.0g	1.5	69	km W of Fort St. John
03/07/2014	1:19:09	56.319	-121.84	5.0g	2.2	61	km W of Fort St. John
02/07/2014	2:12:36	57.491	-122.674	1.0g	1.2	147	km S of Fort Nelson
01/07/2014	18:45:46	56.429	-121.839	5.0g	1.7	64	km W of Fort St. John
01/07/2014	7:31:49	56.234	-121.832	5.0g	2.2	60	km W of Fort St. John
30/06/2014	20:25:59	56.226	-121.824	5.0g	1.6	60	km W of Fort St. John
30/06/2014	19:38:46	56.238	-121.837	1.0g	3.0	61	km W of Fort St. John
30/06/2014	10:59:23	56.233	-121.933	10.0g	0.9	66	km W of Fort St. John
30/06/2014	7:16:09	56.246	-121.899	5.0g	1.0	64	km W of Fort St. John
26/06/2014	13:26:33	56.207	-122.11	5.0g	2.7	78	km W of Fort St. John
25/06/2014	7:48:22	56.6	-122.421	10.0g	2.0	104	km WNW of Fort St. John
25/06/2014	3:53:08	56.581	-122.509	10.0g	1.8	108	km WNW of Fort St. John
25/06/2014	3:45:50	56.574	-122.406	10.0g	1.6	102	km WNW of Fort St. John
19/06/2014	14:50:55	58.546	-122.92	20.0g	1.9	32	km SW of Fort Nelson
11/06/2014	8:27:11	56.514	-122.353	15.0g	1.9	97	km W of Fort St. John
03/06/2014	3:17:12	57.019	-122.3	5.0g	1.4	123	km WNW of Fort St. John
02/06/2014	9:40:39	56.996	-122.367	10.0g	2.9	124	km WNW of Fort St. John
29/05/2014	0:11:54	55.255	-121.936	1.0g	2.8	121	km WSW of Dawson Creek
26/05/2014	22:07:04	57.021	-122.322	5.0g	1.3	124	km WNW of Fort St. John

Date	Time_UT_	Latitude	Longitude	Depth	Mag	Region	
26/05/2014	0:43:21	55.944	-121.09	10.0g	0.0	37	km SW of Fort St. John
26/05/2014	0:43:21	55.945	-121.089	10.0g	1.8	37	km SW of Fort St. John
25/05/2014	23:40:27	55.949	-121.076	10.0g	2.0	36	km SW of Fort St. John
25/05/2014	18:09:23	55.933	-121.099	10.0g	1.6	38	km SW of Fort St. John
18/05/2014	23:13:36	56.273	-120.875	5.0g	2.2	3	km NW of Fort St. John
15/05/2014	7:37:56	57.014	-122.243	10.0g	1.5	120	km WNW of Fort St. John
14/05/2014	13:49:04	56.316	-122.18	10.0g	1.9	82	km W of Fort St. John
14/05/2014	13:45:00	56.324	-122.096	5.0g	2.2	77	km W of Fort St. John
12/05/2014	22:03:16	55.41	-121.782	5.0g	2.7	105	km WSW of Dawson Creek
12/05/2014	18:44:23	56.823	-122.034	10.0g	2.3	96	km WNW of Fort St. John
12/05/2014	0:47:29	56.511	-122.33	10.0g	2.2	95	km W of Fort St. John
28/04/2014	1:37:45	56.518	-122.361	10.0g	2.7	97	km W of Fort St. John
25/04/2014	20:05:51	56.988	-122.329	10.0g	2.7	122	km WNW of Fort St. John
25/04/2014	1:11:53	56.509	-122.214	10.0g	1.5	88	km W of Fort St. John
23/04/2014	12:56:45	56.409	-122.038	10.0g	1.8	75	km W of Fort St. John
21/04/2014	23:58:54	56.523	-122.451	5.0g	2.3	103	km W of Fort St. John
21/04/2014	23:28:41	56.06	-120.919	10.0g	2.5	21	km SSW of Fort St. John
16/04/2014	13:37:51	56.503	-122.297	10.0g	1.6	93	km W of Fort St. John
16/04/2014	12:13:19	57.017	-122.334	5.0g	1.5	124	km WNW of Fort St. John
15/04/2014	15:24:13	56.506	-122.224	10.0g	2.1	89	km W of Fort St. John
13/04/2014	13:12:17	56.993	-122.244	10.0g	2.8	118	km WNW of Fort St. John
13/04/2014	6:24:59	56.523	-122.234	10.0g	2.3	90	km W of Fort St. John
13/04/2014	3:37:32	56.501	-122.435	10.0g	1.2	101	km W of Fort St. John
10/04/2014	19:28:44	57.011	-122.371	10.0g	1.8	125	km WNW of Fort St. John
10/04/2014	5:31:09	56.516	-122.272	15.0g	2.7	92	km W of Fort St. John
10/04/2014	2:50:12	56.486	-122.212	10.0g	1.7	87	km W of Fort St. John
09/04/2014	22:29:47	56.377	-121.898	5.0g	2.4	66	km W of Fort St. John
09/04/2014	2:56:16	57.008	-122.307	10.0g	2.2	122	km WNW of Fort St. John
08/04/2014	23:44:40	56.463	-122.421	10.0g	1.3	99	km W of Fort St. John
08/04/2014	7:02:40	56.179	-122.142	10.0g	1.9	80	km W of Fort St. John
07/04/2014	7:28:22	57.287	-122.472	5.0g	1.5	152	km WNW of Fort St. John
07/04/2014	3:28:46	56.492	-122.329	10.0g	1.3	95	km W of Fort St. John
05/04/2014	1:59:12	55.016	-121.268	5.0g	2.6	106	km SW of Dawson Creek
04/04/2014	11:04:36	59.893	-122.465	10.8*	1.5	120	km NNE of Fort Nelson
01/04/2014	2:19:08	56.322	-122.097	10.0g	1.7	77	km W of Fort St. John
31/03/2014	23:28:04	56.481	-121.843	5.0g	1.2	66	km WNW of Fort St. John
29/03/2014	10:10:32	57.215	-122.593	10.0g	1.4	151	km WNW of Fort St. John
29/03/2014	7:00:34	57.024	-122.174	5.0g	2.6	118	km WNW of Fort St. John
23/03/2014	21:58:41	55.63	-121.981	5.0g	2.2	98	km WSW of Fort St. John
22/03/2014	22:09:56	55.438	-121.978	1.0g	3.0	114	km SW of Fort St. John
20/03/2014	21:21:48	56.588	-121.589	10.0g	2.3	59	km WNW of Fort St. John

Date	Time_UT_	Latitude	Longitude	Depth	Mag	Region	
18/03/2014	22:01:55	55.412	-121.857	5.0g	3.0	109	km WSW of Dawson Creek
16/03/2014	7:13:49	56.444	-121.791	5.0g	2.9	61	km WNW of Fort St. John
13/03/2014	19:37:02	57.304	-122.474	5.0g	1.9	153	km WNW of Fort St. John
12/03/2014	7:38:17	57.316	-122.437	10.0g	2.4	153	km NW of Fort St. John
11/03/2014	17:22:24	57.314	-122.443	10.0g	2.5	153	km NW of Fort St. John
11/03/2014	15:15:27	57.314	-122.464	10.0g	2.9	153	km WNW of Fort St. John
11/03/2014	8:50:42	57.307	-122.451	10.0g	2.1	152	km WNW of Fort St. John
11/03/2014	8:49:08	57.309	-122.498	10.0g	2.1	154	km WNW of Fort St. John
11/03/2014	6:37:03	57.317	-122.485	10.0g	1.2	155	km WNW of Fort St. John
10/03/2014	6:37:08	57.313	-122.428	5.0g	1.2	152	km NW of Fort St. John
07/03/2014	2:03:26	55.027	-121.194	6.1*	2.8	102	km SW of Dawson Creek
02/03/2014	22:24:23	57.295	-122.481	7.9*	3.2	153	km WNW of Fort St. John
02/03/2014	13:24:02	57.301	-122.461	9.2*	2.0	152	km WNW of Fort St. John
02/03/2014	10:39:44	57.335	-122.416	5.0*	2.6	153	km NW of Fort St. John
01/03/2014	18:33:03	56.31	-122.043	14.7*	2.5	74	km W of Fort St. John
01/03/2014	11:14:58	57.013	-122.299	12.4*	2.2	122	km WNW of Fort St. John
01/03/2014	4:35:29	56.458	-121.766	5.0g	3.4	61	km WNW of Fort St. John
01/03/2014	3:48:21	57.206	-122.489	5.0g	2.6	146	km WNW of Fort St. John
27/02/2014	5:08:43	56.809	-122.007	10.0g	2.0	94	km WNW of Fort St. John
25/02/2014	21:55:40	58.547	-122.967	5.0g	2.4	33	km SW of Fort Nelson
21/02/2014	1:38:26	55.099	-121.231	5.0g	3.0	97	km SW of Dawson Creek
19/02/2014	14:21:37	57.008	-122.263	10.0g	2.0	120	km WNW of Fort St. John
19/02/2014	5:12:07	57.352	-122.592	5.0g	1.3	162	km WNW of Fort St. John
18/02/2014	7:03:29	57.352	-122.595	5.0g	1.8	162	km WNW of Fort St. John
11/02/2014	11:54:54	57.182	-122.541	5.0g	2.4	146	km WNW of Fort St. John
10/02/2014	22:08:39	55.407	-121.755	5.0g	2.3	103	km WSW of Dawson Creek
09/02/2014	4:43:55	56.544	-122.346	10.0g	2.1	97	km W of Fort St. John
07/02/2014	20:07:03	55.856	-120.324	5.0g	1.7	11	km NW of Dawson Creek
07/02/2014	15:32:46	55.871	-120.386	5.0g	1.7	15	km NW of Dawson Creek
28/01/2014	1:24:02	57.214	-122.384	5.0g	2.0	142	km WNW of Fort St. John
27/01/2014	18:03:16	57.227	-122.548	5.0g	2.0	150	km WNW of Fort St. John
23/01/2014	4:51:46	57.302	-122.666	10.0g	2.0	161	km WNW of Fort St. John
23/01/2014	3:59:40	56.352	-121.83	10.0g	2.9	61	km W of Fort St. John
23/01/2014	3:42:50	57.315	-122.744	10.0g	1.7	165	km WNW of Fort St. John
23/01/2014	3:30:04	57.307	-122.705	10.0g	3.0	163	km WNW of Fort St. John
22/01/2014	19:19:23	57.005	-122.25	10.0g	2.0	120	km WNW of Fort St. John
22/01/2014	9:37:06	56.918	-122.001	10.0g	2.2	102	km WNW of Fort St. John
21/01/2014	22:36:55	56.449	-121.849	5.0g	2.0	65	km WNW of Fort St. John
21/01/2014	19:24:34	57.289	-122.705	5.0g	2.4	161	km WNW of Fort St. John
21/01/2014	2:46:06	57.008	-122.272	10.0g	2.8	121	km WNW of Fort St. John

Date	Time_UT_	Latitude	Longitude	Depth	Mag	Region	
19/01/2014	9:14:26	57.293	-122.727	5.0g	2.3	163	km WNW of Fort St. John
17/01/2014	16:43:38	57.314	-122.611	12.2*	2.4	159	km WNW of Fort St. John
16/01/2014	2:44:49	57.343	-122.446	5.0g	1.3	155	km NW of Fort St. John
15/01/2014	4:22:34	57.303	-122.6	5.0g	1.9	158	km WNW of Fort St. John
15/01/2014	0:04:43	57.29	-122.626	5.0g	2.7	158	km WNW of Fort St. John
14/01/2014	22:20:05	55.647	-122.219	5.0g	3.1	108	km WSW of Fort St. John
14/01/2014	16:10:52	57.315	-122.773	10.0g	2.8	166	km WNW of Fort St. John
14/01/2014	15:52:03	57.319	-122.678	10.0g	2.0	163	km WNW of Fort St. John
14/01/2014	12:40:22	57.328	-122.828	10.0g	2.6	165	km S of Fort Nelson
13/01/2014	21:34:57	57.316	-122.532	0.0g	2.6	156	km WNW of Fort St. John
13/01/2014	3:05:25	57.31	-122.717	5.0g	1.8	163	km WNW of Fort St. John
13/01/2014	2:03:15	57.303	-122.726	10.0g	2.3	163	km WNW of Fort St. John
12/01/2014	13:56:23	57.036	-122.211	10.0g	2.9	120	km WNW of Fort St. John
11/01/2014	12:53:33	56.493	-122.242	5.0g	2.3	89	km W of Fort St. John
06/01/2014	23:06:41	56.984	-122.263	1.0g	2.2	119	km WNW of Fort St. John
29/12/2013	12:33:00	57.359	-122.339	12.7*	2.5	153	km NW of Fort St. John
28/12/2013	11:40:02	57.378	-122.339	16.1*	2.5	154	km NW of Fort St. John
28/12/2013	6:18:27	57.017	-122.178	5.0g	1.7	117	km WNW of Fort St. John
28/12/2013	1:36:57	57.007	-122.261	7.6*	1.7	120	km WNW of Fort St. John
25/12/2013	8:09:42	56.986	-122.217	5.0g	2.3	117	km WNW of Fort St. John
24/12/2013	12:04:15	57.377	-122.315	10.0g	1.4	153	km NW of Fort St. John
23/12/2013	12:26:05	57.379	-122.331	10.0g	2.4	154	km NW of Fort St. John
23/12/2013	10:56:52	57.382	-122.303	10.0g	2.4	153	km NW of Fort St. John
22/12/2013	9:46:23	56.468	-122.368	8.9*	1.9	96	km W of Fort St. John
21/12/2013	0:53:58	56.294	-121.865	5.0g	2.4	62	km W of Fort St. John
19/12/2013	6:06:20	56.477	-122.293	15.0g	1.7	92	km W of Fort St. John
17/12/2013	14:01:32	56.406	-122.297	10.0g	2.0	90	km W of Fort St. John
17/12/2013	11:59:18	57.187	-122.438	5.0g	1.9	142	km WNW of Fort St. John
17/12/2013	2:34:05	56.542	-122.344	5.0g	2.5	97	km W of Fort St. John
16/12/2013	3:52:41	56.493	-122.382	10.0g	2.0	98	km W of Fort St. John
12/12/2013	7:59:33	56.089	-120.897	5.0g	2.1	18	km SSW of Fort St. John
08/12/2013	16:48:09	56.318	-121.988	15.0g	1.8	70	km W of Fort St. John
06/12/2013	15:43:43	56.974	-122.204	10.0g	2.6	115	km WNW of Fort St. John
04/12/2013	12:06:37	56.453	-122.481	15.0g	2.2	103	km W of Fort St. John
29/11/2013	16:29:00	56.746	-122.238	8.3*	2.8	101	km WNW of Fort St. John
29/11/2013	7:38:32	56.55	-122.416	13.5*	2.5	102	km W of Fort St. John
23/11/2013	13:14:56	56.894	-122.058	14.5*	2.3	103	km WNW of Fort St. John
21/11/2013	7:36:28	56.758	-122.044	5.0g	2.1	92	km WNW of Fort St. John
18/11/2013	20:00:32	56.714	-122.034	5.0g	2.3	89	km WNW of Fort St. John
18/11/2013	8:33:05	56.411	-121.648	5.0g	2.7	52	km WNW of Fort St. John
10/11/2013	2:34:07	56.988	-122.176	5.0g	2.4	115	km WNW of Fort St. John
09/11/2013	13:14:26	56.984	-122.194	5.0g	2.0	115	km WNW of Fort St. John

Date	Time_UT_	Latitude	Longitude	Depth	Mag	Region		
06/11/2013	12:13:55	56.42	-121.791	10.0g	2.7	61	km	W of Fort St. John
01/11/2013	22:10:39	56.892	-121.817	5.0g	1.9	92	km	WNW of Fort St. John
01/11/2013	18:20:41	55.041	-120.924	5.0g	2.6	91	km	SW of Dawson Creek
30/10/2013	2:43:37	56.509	-122.196	10.0g	2.3	87	km	W of Fort St. John
28/10/2013	12:01:03	55.906	-120.282	5.0g	2.7	15	km	NNW of Dawson Creek
26/10/2013	18:02:43	57.008	-122.283	5.0g	2.3	121	km	WNW of Fort St. John
26/10/2013	2:42:30	57.014	-122.23	6.9*	1.8	119	km	WNW of Fort St. John
25/10/2013	19:06:36	55.9	-120.225	5.0g	2.3	14	km	N of Dawson Creek
25/10/2013	11:31:59	55.89	-120.24	5.0g	2.4	13	km	N of Dawson Creek
25/10/2013	9:05:11	55.9	-120.26	5.0g	2.1	14	km	NNW of Dawson Creek
24/10/2013	12:40:48	57.03	-122.302	10.0g	1.8	124	km	WNW of Fort St. John
24/10/2013	5:10:45	55.901	-120.296	5.0g	2.8	15	km	NNW of Dawson Creek
24/10/2013	0:42:41	55.891	-120.279	5.0g	2.2	14	km	NNW of Dawson Creek
23/10/2013	17:46:12	55.941	-120.378	5.0g	1.6	21	km	NW of Dawson Creek
23/10/2013	15:02:47	55.902	-120.285	14.3*	1.9	15	km	NNW of Dawson Creek
23/10/2013	9:33:56	55.888	-120.367	16.4*	2.0	15	km	NW of Dawson Creek
23/10/2013	9:05:39	55.872	-120.087	9.1*	1.2	14	km	NE of Dawson Creek
23/10/2013	8:41:44	55.918	-120.287	5.0g	1.4	17	km	NNW of Dawson Creek
23/10/2013	7:55:37	55.921	-120.362	8.3*	2.2	18	km	NW of Dawson Creek
21/10/2013	18:14:36	55.439	-121.884	5.0g	2.2	110	km	W of Dawson Creek
18/10/2013	10:37:33	55.914	-120.377	5.2*	2.4	18	km	NW of Dawson Creek
18/10/2013	9:49:08	55.878	-120.211	5.0g	2.2	12	km	NNE of Dawson Creek
18/10/2013	9:23:21	55.85	-120.057	5.0g	1.6	14	km	ENE of Dawson Creek
18/10/2013	9:05:15	55.661	-121.099	10.0g	2.1	55	km	W of Dawson Creek
18/10/2013	8:39:14	55.896	-120.408	5.0g	1.4	18	km	NW of Dawson Creek
18/10/2013	7:16:05	55.917	-120.314	5.0g	2.2	17	km	NNW of Dawson Creek
16/10/2013	17:46:10	56.993	-122.233	10.0g	3.0	118	km	WNW of Fort St. John
14/10/2013	9:34:11	59.783	-122.707	10.0g	2.0	107	km	N of Fort Nelson
14/10/2013	2:33:12	57.019	-122.178	5.0g	2.7	118	km	WNW of Fort St. John
07/10/2013	20:52:22	57.015	-122.144	1.0g	1.8	116	km	WNW of Fort St. John
02/10/2013	23:00:56	57.421	-122.757	5.0g	2.5	155	km	S of Fort Nelson
02/10/2013	22:54:47	57.436	-122.769	5.0g	2.5	153	km	S of Fort Nelson
02/10/2013	7:25:58	57.429	-122.706	1.0g	1.4	154	km	S of Fort Nelson
17/09/2013	7:19:26	59.777	-122.769	9.4*	2.6	106	km	N of Fort Nelson
04/09/2013	22:34:18	56.571	-122.238	5.0g	1.8	92	km	WNW of Fort St. John
03/09/2013	2:45:26	56.476	-121.738	5.0g	3.3	60	km	WNW of Fort St. John
01/09/2013	17:30:47	56.185	-121.838	11.2*	1.9	61	km	W of Fort St. John
01/09/2013	16:12:38	56.187	-121.953	11.7*	1.9	68	km	W of Fort St. John
01/09/2013	16:12:38	56.188	-121.954	11.8*	2.4	68	km	W of Fort St. John
31/08/2013	11:14:22	56.9	-122.016	6.7*	2.7	101	km	WNW of Fort St. John
26/08/2013	18:30:27	56.168	-121.621	5.0g	1.9	48	km	W of Fort St. John
26/08/2013	13:34:18	56.926	-121.902	1.0g	2.2	99	km	WNW of Fort St. John

Date	Time_UT_	Latitude	Longitude	Depth	Mag	Region	
23/08/2013	5:42:28	56.912	-122.024	6.6*	2.1	103	km WNW of Fort St. John
22/08/2013	1:36:50	56.913	-122.067	5.0g	2.2	104	km WNW of Fort St. John
21/08/2013	15:31:31	56.907	-122	10.0g	3.4	101	km WNW of Fort St. John
21/08/2013	0:05:40	56.911	-122.063	5.0g	2.0	104	km WNW of Fort St. John
21/08/2013	0:04:16	56.887	-121.965	1.0g	1.5	98	km WNW of Fort St. John
20/08/2013	23:54:37	56.932	-122.055	5.0g	1.5	105	km WNW of Fort St. John
20/08/2013	4:04:34	56.925	-121.959	1.0g	1.6	101	km WNW of Fort St. John
19/08/2013	17:42:51	56.926	-121.984	5.0g	1.9	102	km WNW of Fort St. John
16/08/2013	19:42:38	56.098	-120.882	1.4*	2.6	17	km SSW of Fort St. John
16/08/2013	2:01:09	55.07	-121.184	7.1*	2.4	98	km SW of Dawson Creek
14/08/2013	0:14:48	56.236	-121.764	0.0g	2.1	56	km W of Fort St. John
10/08/2013	3:13:33	56.182	-121.794	1.7*	2.3	58	km W of Fort St. John
09/08/2013	3:46:17	56.218	-121.942	10.4*	2.0	67	km W of Fort St. John
09/08/2013	1:55:43	55.08	-121.303	3.2*	2.4	102	km WSW of Dawson Creek
07/08/2013	7:06:21	56.476	-122.207	10.0g	2.5	87	km W of Fort St. John
05/08/2013	22:08:32	55.383	-121.635	10.0g	2.6	98	km WSW of Dawson Creek
30/07/2013	17:09:42	56.242	-122.13	0.1*	2.4	79	km W of Fort St. John
27/07/2013	12:30:28	56.515	-122.282	10.0g	2.0	93	km W of Fort St. John
25/07/2013	19:24:32	56.162	-121.892	10.0g	1.7	65	km W of Fort St. John
25/07/2013	18:03:56	56.222	-121.984	5.0g	1.9	70	km W of Fort St. John
25/07/2013	16:14:00	56.2	-122.142	5.0g	1.8	80	km W of Fort St. John
25/07/2013	3:20:53	56.175	-121.929	10.0g	2.2	67	km W of Fort St. John
19/07/2013	22:17:06	55.393	-121.839	0.0*	2.9	109	km WSW of Dawson Creek
16/07/2013	7:51:14	56.581	-122.089	5.0g	2.3	84	km WNW of Fort St. John
13/07/2013	6:36:57	56.082	-121.026	1.0g	2.7	21	km SW of Fort St. John
13/07/2013	1:56:13	55.094	-121.339	10.0g	2.2	102	km WSW of Dawson Creek
29/06/2013	6:57:17	56.074	-120.819	1.0g	2.9	19	km S of Fort St. John
02/06/2013	0:56:05	56.011	-120.786	1.0g	2.5	26	km SSE of Fort St. John
28/05/2013	4:48:25	56.073	-121.023	10.0g	2.8	22	km SW of Fort St. John
28/05/2013	4:36:08	56.145	-120.868	5.0g	4.2	11	km S of Fort St. John
27/04/2013	2:06:44	56.531	-121.823	0.0g	1.9	67	km WNW of Fort St. John
24/04/2013	2:06:01	56.298	-121.976	15.0g	2.2	69	km W of Fort St. John
16/04/2013	5:37:37	56.391	-122.049	1.0g	2.5	75	km W of Fort St. John
10/04/2013	2:44:26	56.331	-121.916	10.0g	2.1	66	km W of Fort St. John
07/04/2013	12:52:25	56.269	-121.714	20.0g	2.9	53	km W of Fort St. John
07/04/2013	2:39:11	56.342	-121.852	10.6*	3.5	62	km W of Fort St. John

Date	Time_UT	Lat	Long	Depth	Mag	Region_and		
29/01/2015	21:33:47	57.262	-122.549	4.6*	2	153	km	WNW of Fort St. John
21/01/2015	16:14:19	57.266	-122.597	7.0*	1.9	155	km	WNW of Fort St. John
21/01/2015	0:51:28	57.253	-122.577	10.5*	1.9	153	km	WNW of Fort St. John
20/01/2015	15:20:10	57.321	-122.575	7.5*	1.6	158	km	WNW of Fort St. John
18/01/2015	5:50:41	57.267	-122.474	5.0g	2.3	150	km	WNW of Fort St. John
18/01/2015	23:33:20	57.303	-122.656	5.0g	1.8	160	km	WNW of Fort St. John
16/01/2015	0:56:49	57.277	-122.5	5.0g	1.9	152	km	WNW of Fort St. John
15/01/2015	6:13:04	57.261	-122.533	5.0g	2.8	152	km	WNW of Fort St. John
15/01/2015	7:18:36	56.422	-121.822	10.0g	2.2	62	km	W of Fort St. John
15/01/2015	23:47:18	57.255	-122.586	5.0g	2.1	154	km	WNW of Fort St. John
15/01/2015	6:42:01	57.269	-122.58	10.0g	1.9	154	km	WNW of Fort St. John
15/01/2015	6:22:10	57.263	-122.484	5.0g	1.7	150	km	WNW of Fort St. John
14/01/2015	2:25:49	56.47	-122.297	5.0g	2.4	92	km	W of Fort St. John
11/01/2015	2:24:08	56.544	-121.885	10.0g	1.9	71	km	WNW of Fort St. John
08/01/2015	1:35:27	56.591	-122.368	5.0g	1.6	100	km	WNW of Fort St. John
05/01/2015	2:10:58	56.325	-121.918	10.0g	2.2	66	km	W of Fort St. John
02/01/2015	1:15:38	56.305	-122.122	20.0g	2.3	78	km	W of Fort St. John
29/12/2014	15:03:13	56.335	-121.905	5.0g	3.3	65	km	W of Fort St. John
27/12/2014	10:28:58	56.335	-121.843	5.9*	2.4	62	km	W of Fort St. John
26/12/2014	5:03:29	56.357	-121.882	0.0*	2.2	64	km	W of Fort St. John
23/12/2014	19:05:57	56.32	-121.949	5.0g	1.5	68	km	W of Fort St. John
21/12/2014	0:18:36	56.533	-122.242	5.0g	3.1	91	km	WNW of Fort St. John
20/12/2014	13:05:30	56.3	-121.905	20.0g	2.4	65	km	W of Fort St. John
18/12/2014	11:57:50	56.298	-121.962	15.0g	2	68	km	W of Fort St. John
18/12/2014	5:25:38	56.495	-122.19	10.0g	2	87	km	W of Fort St. John
17/12/2014	10:01:48	56.344	-121.89	7.9*	3.5	65	km	W of Fort St. John
17/12/2014	16:34:30	56.313	-121.858	5.0g	2.2	62	km	W of Fort St. John
16/12/2014	8:44:27	56.47	-122.384	11.8*	2.1	97	km	W of Fort St. John
16/12/2014	10:43:43	56.476	-122.412	13.9*	2	99	km	W of Fort St. John
16/12/2014	10:24:47	56.485	-122.289	0.0g	2	92	km	W of Fort St. John
13/12/2014	14:04:07	57.128	-122.282	1.0g	1.7	131	km	WNW of Fort St. John
13/12/2014	8:28:13	57.305	-122.493	5.0g	1.6	154	km	WNW of Fort St. John
13/12/2014	16:27:04	57.303	-122.579	1.0g	1.5	157	km	WNW of Fort St. John
11/12/2014	16:57:32	55.865	-120.161	10.0g	2.5	11	km	NE of Dawson Creek
11/12/2014	10:46:25	56.3	-121.979	15.0g	1.9	70	km	W of Fort St. John
08/12/2014	10:02:18	57.282	-122.597	5.0g	2.2	156	km	WNW of Fort St. John
07/12/2014	18:55:20	56.317	-121.903	5.0g	2.5	65	km	W of Fort St. John
06/12/2014	17:04:43	56.555	-122.341	10.0g	2.1	97	km	WNW of Fort St. John
06/12/2014	9:25:51	57.295	-122.584	5.0g	2.1	157	km	WNW of Fort St. John

Date	Time_UT	Lat	Long	Depth	Mag	Region_and	
05/12/2014	20:18:11	57.181	-122.458	5.0g	2.2	142 km	WNW of Fort St. John
02/12/2014	18:36:40	56.766	-121.498	10.0g	2.1	69 km	NW of Fort St. John
02/12/2014	18:59:29	56.77	-121.516	5.0g	2	70 km	NW of Fort St. John
02/12/2014	18:49:16	56.768	-121.554	10.0g	2	72 km	NW of Fort St. John
02/12/2014	11:17:21	56.492	-122.284	10.0g	2	92 km	W of Fort St. John
01/12/2014	19:55:34	57.245	-122.674	5.0g	2	157 km	WNW of Fort St. John
01/12/2014	8:22:37	56.721	-121.321	10.0g	1.8	59 km	NW of Fort St. John
26/11/2014	17:19:24	57.282	-122.753	5.0g	1.9	163 km	WNW of Fort St. John
25/11/2014	2:21:19	56.554	-122.444	10.0g	2.3	103 km	W of Fort St. John
24/11/2014	10:02:46	56.568	-122.376	10.0g	2.9	100 km	WNW of Fort St. John
24/11/2014	21:30:18	57.287	-122.778	5.0g	1.9	164 km	WNW of Fort St. John
23/11/2014	1:34:03	56.331	-121.873	10.0g	2.8	63 km	W of Fort St. John
22/11/2014	2:50:31	57.24	-122.544	6.0*	2.6	151 km	WNW of Fort St. John
22/11/2014	21:52:04	56.281	-121.909	5.0g	0	65 km	W of Fort St. John
01/11/2014	20:26:22	56.987	-122.104	12.9*	2.1	112 km	WNW of Fort St. John
01/11/2014	6:07:32	56.947	-122.152	11.8*	2.1	111 km	WNW of Fort St. John
31/10/2014	2:12:18	57.26	-122.583	11.5*	2.6	154 km	WNW of Fort St. John
31/10/2014	9:23:36	56.963	-122.143	11.4*	2.5	112 km	WNW of Fort St. John
31/10/2014	20:07:56	57.291	-122.281	5.6*	1.9	145 km	NW of Fort St. John
22/10/2014	2:35:20	56.583	-122.334	1.0g	2.4	98 km	WNW of Fort St. John
21/10/2014	5:57:59	56.598	-122.338	10.0g	2.7	99 km	WNW of Fort St. John
21/10/2014	5:06:42	56.477	-122.349	10.0g	1.1	95 km	W of Fort St. John
19/10/2014	9:42:49	56.303	-121.833	12.5*	2.2	61 km	W of Fort St. John
19/10/2014	11:05:54	57.139	-122.43	16.8*	1.7	138 km	WNW of Fort St. John
15/10/2014	15:30:17	56.314	-121.925	9.3*	1.6	66 km	W of Fort St. John
14/10/2014	0:22:54	56.482	-122.243	15.0*	1.9	89 km	W of Fort St. John
10/10/2014	16:54:08	56.051	-120.769	10.0g	1.8	22 km	SSE of Fort St. John
10/10/2014	1:56:25	56.433	-121.969	10.0g	1.8	71 km	W of Fort St. John
09/10/2014	10:59:55	56.464	-122.419	10.0g	1.7	99 km	W of Fort St. John
08/10/2014	6:32:37	56.473	-122.336	10.0g	1.8	94 km	W of Fort St. John
07/10/2014	10:25:58	57.03	-122.171	10.0g	1.6	118 km	WNW of Fort St. John
06/10/2014	2:01:32	57.02	-122.272	10.0g	1.7	122 km	WNW of Fort St. John
05/10/2014	23:53:00	56.398	-121.881	10.0g	1.7	65 km	W of Fort St. John
04/10/2014	16:59:57	56.985	-122.254	10.5*	2.6	118 km	WNW of Fort St. John
04/10/2014	6:52:44	57.236	-122.648	9.1*	2	155 km	WNW of Fort St. John
02/10/2014	1:34:06	55.895	-120.271	5.0g	2.7	14 km	NNW of Dawson Creek
01/10/2014	11:28:02	55.873	-120.277	10.0g	2.2	12 km	NNW of Dawson Creek
27/09/2014	23:30:10	56.519	-122.339	10.0g	2.3	96 km	W of Fort St. John
26/09/2014	16:42:24	56.514	-122.27	1.0g	2.9	92 km	W of Fort St. John
26/09/2014	20:10:51	56.48	-122.424	5.0g	2	100 km	W of Fort St. John
20/09/2014	17:35:34	56.053	-120.483	10.0g	1.8	31 km	ESE of Fort St. John

Date	Time_UT	Lat	Long	Depth	Mag	Region_and		
19/09/2014	23:09:04	57.343	-122.549	5.0g	2.1	159	km	WNW of Fort St. John
19/09/2014	13:06:33	57.339	-122.532	10.0g	1.5	158	km	WNW of Fort St. John
18/09/2014	12:49:40	56.317	-122.065	5.0g	1.5	75	km	W of Fort St. John
16/09/2014	10:20:52	56.015	-120.583	16.1*	2.3	30	km	SE of Fort St. John
11/09/2014	8:04:34	56.071	-120.566	5.0g	1.5	26	km	ESE of Fort St. John
10/09/2014	23:00:35	56.055	-120.534	10.0g	1.9	29	km	ESE of Fort St. John
10/09/2014	4:49:02	56.069	-120.566	5.0g	1.6	26	km	ESE of Fort St. John
07/09/2014	11:32:15	57.194	-122.527	10.0g	2.5	146	km	WNW of Fort St. John
03/09/2014	20:01:34	56.598	-122.371	5.0g	2.8	101	km	WNW of Fort St. John
27/08/2014	5:59:46	57.156	-122.512	10.0g	1.2	143	km	WNW of Fort St. John
27/08/2014	5:55:07	57.159	-122.499	10.0g	1.2	142	km	WNW of Fort St. John
26/08/2014	1:35:21	56.759	-121.888	5.0g	1.7	85	km	WNW of Fort St. John
26/08/2014	18:52:38	57.163	-122.445	10.0g	1.3	140	km	WNW of Fort St. John
25/08/2014	10:26:37	57.158	-122.454	5.0g	2	140	km	WNW of Fort St. John
24/08/2014	15:14:59	56.773	-121.949	5.0g	1.9	89	km	WNW of Fort St. John
24/08/2014	0:33:23	56.306	-121.788	5.0g	1.6	58	km	W of Fort St. John
24/08/2014	1:14:54	57.24	-122.814	5.0g	1.5	162	km	WNW of Fort St. John
24/08/2014	4:35:32	57.16	-122.43	5.0g	1.3	139	km	WNW of Fort St. John
24/08/2014	8:41:13	56.772	-121.994	5.0g	1.1	91	km	WNW of Fort St. John
23/08/2014	21:13:45	56.797	-122.055	5.0g	2.5	95	km	WNW of Fort St. John
23/08/2014	21:53:38	56.79	-121.977	6.5*	2.3	91	km	WNW of Fort St. John
23/08/2014	13:56:05	56.753	-122.015	12.2*	1.9	90	km	WNW of Fort St. John
22/08/2014	19:19:19	57.255	-122.79	5.0g	2	162	km	WNW of Fort St. John
21/08/2014	4:54:41	57.054	-122.213	5.0g	1.4	122	km	WNW of Fort St. John
19/08/2014	11:12:32	57.263	-122.15	13.8*	1.9	137	km	NW of Fort St. John
13/08/2014	11:59:20	56.327	-121.898	1.0g	1.7	65	km	W of Fort St. John
12/08/2014	20:11:02	56.542	-122.431	5.0g	2.5	102	km	W of Fort St. John
11/08/2014	3:25:19	57.053	-122.377	10.0g	1.8	129	km	WNW of Fort St. John
10/08/2014	6:21:32	56.361	-122.325	10.0g	1.5	91	km	W of Fort St. John
08/08/2014	21:54:55	57.489	-122.792	10.0g	2.7	147	km	S of Fort Nelson
05/08/2014	3:22:55	56.422	-121.892	10.0g	1.4	67	km	W of Fort St. John
04/08/2014	17:17:24	57.564	-122.942	5.0g	4.4	140	km	S of Fort Nelson
01/08/2014	23:44:53	56.553	-122.144	5.0g	1.5	86	km	WNW of Fort St. John
30/07/2014	21:23:56	57.542	-122.894	6.2*	3.8	142	km	S of Fort Nelson
30/07/2014	7:54:55	56.931	-122.049	5.0g	1.9	105	km	WNW of Fort St. John
29/07/2014	9:54:12	56.919	-122.118	12.6*	2.2	107	km	WNW of Fort St. John
29/07/2014	20:31:49	56.52	-122.13	5.0g	2	84	km	WNW of Fort St. John
29/07/2014	13:06:12	56.933	-122.047	5.0g	1.8	105	km	WNW of Fort St. John
29/07/2014	23:45:25	57.481	-122.794	1.8*	1.7	148	km	S of Fort Nelson
29/07/2014	10:27:53	56.938	-122.102	9.3*	1.7	108	km	WNW of Fort St. John
29/07/2014	6:57:31	57.048	-122.246	10.9*	1.7	123	km	WNW of Fort St. John

Date	Time_UT	Lat	Long	Depth	Mag	Region_and	
28/07/2014	17:42:10	56.918	-121.928	5.0g	1.8	99 km	WNW of Fort St. John
26/07/2014	14:00:17	57.046	-122.232	5.0g	2.3	122 km	WNW of Fort St. John
20/07/2014	4:52:52	57.044	-122.216	5.0g	2.2	121 km	WNW of Fort St. John
19/07/2014	13:05:36	57.041	-122.254	5.0g	1.7	123 km	WNW of Fort St. John
18/07/2014	19:30:38	57.044	-122.264	5.0g	1.7	123 km	WNW of Fort St. John
17/07/2014	9:07:31	57.017	-122.116	10.0g	2.5	115 km	WNW of Fort St. John
16/07/2014	17:44:06	57.268	-122.727	1.0g	3.7	161 km	WNW of Fort St. John
15/07/2014	0:26:23	57.234	-122.714	5.0g	2.4	157 km	WNW of Fort St. John
15/07/2014	0:12:35	57.228	-122.836	10.0g	1.5	162 km	WNW of Fort St. John
15/07/2014	6:44:51	57.052	-122.45	5.0g	1.3	132 km	WNW of Fort St. John
14/07/2014	6:37:20	57.23	-122.727	5.0g	1.6	158 km	WNW of Fort St. John
14/07/2014	18:31:53	57.069	-122.321	10.0g	1.4	128 km	WNW of Fort St. John
14/07/2014	17:34:57	57.059	-122.406	10.0g	1.3	131 km	WNW of Fort St. John
14/07/2014	7:46:06	56.468	-122.425	5.0g	1.3	100 km	W of Fort St. John
14/07/2014	7:12:37	57.23	-122.764	5.0g	0.9	159 km	WNW of Fort St. John
11/07/2014	22:18:17	57.207	-122.576	5.0g	1.6	149 km	WNW of Fort St. John
10/07/2014	8:22:26	56.589	-122.129	5.0g	1.3	87 km	WNW of Fort St. John
08/07/2014	23:12:51	56.437	-122.026	10.0g	1.6	75 km	W of Fort St. John
08/07/2014	13:19:23	57.42	-122.611	10.0g	1.4	155 km	S of Fort Nelson
07/07/2014	22:33:10	56.431	-122.492	15.0g	1	103 km	W of Fort St. John
03/07/2014	1:19:09	56.319	-121.84	5.0g	2.2	61 km	W of Fort St. John
03/07/2014	6:10:22	56.233	-121.972	10.0g	1.5	69 km	W of Fort St. John
02/07/2014	2:12:36	57.491	-122.674	1.0g	1.2	147 km	S of Fort Nelson
01/07/2014	7:31:49	56.234	-121.832	5.0g	2.2	60 km	W of Fort St. John
01/07/2014	18:45:46	56.429	-121.839	5.0g	1.7	64 km	W of Fort St. John
30/06/2014	19:38:46	56.238	-121.837	1.0g	3	61 km	W of Fort St. John
30/06/2014	20:25:59	56.226	-121.824	5.0g	1.6	60 km	W of Fort St. John
30/06/2014	7:16:09	56.246	-121.899	5.0g	1	64 km	W of Fort St. John
30/06/2014	10:59:23	56.233	-121.933	10.0g	0.9	66 km	W of Fort St. John
26/06/2014	13:26:33	56.207	-122.11	5.0g	2.7	78 km	W of Fort St. John
25/06/2014	7:48:22	56.6	-122.421	10.0g	2	104 km	WNW of Fort St. John
25/06/2014	3:53:08	56.581	-122.509	10.0g	1.8	108 km	WNW of Fort St. John
25/06/2014	3:45:50	56.574	-122.406	10.0g	1.6	102 km	WNW of Fort St. John
19/06/2014	14:50:55	58.546	-122.92	20.0g	1.9	32 km	SW of Fort Nelson
11/06/2014	8:27:11	56.514	-122.353	15.0g	1.9	97 km	W of Fort St. John
03/06/2014	3:17:12	57.019	-122.3	5.0g	1.4	123 km	WNW of Fort St. John
02/06/2014	9:40:39	56.996	-122.367	10.0g	2.9	124 km	WNW of Fort St. John
26/05/2014	22:07:04	57.021	-122.322	5.0g	1.3	124 km	WNW of Fort St. John
25/05/2014	18:09:23	55.933	-121.099	10.0g	1.6	38 km	SW of Fort St. John
18/05/2014	23:13:36	56.273	-120.875	5.0g	2.2	3 km	NW of Fort St. John
15/05/2014	7:37:56	57.014	-122.243	10.0g	1.5	120 km	WNW of Fort St. John

Date	Time_UT	Lat	Long	Depth	Mag	Region_and		
14/05/2014	13:45:00	56.324	-122.096	5.0g	2.2	77	km	W of Fort St. John
14/05/2014	13:49:04	56.316	-122.18	10.0g	1.9	82	km	W of Fort St. John
12/05/2014	18:44:23	56.823	-122.034	10.0g	2.3	96	km	WNW of Fort St. John
12/05/2014	0:47:29	56.511	-122.33	10.0g	2.2	95	km	W of Fort St. John
28/04/2014	1:37:45	56.518	-122.361	10.0g	2.7	97	km	W of Fort St. John
25/04/2014	20:05:51	56.988	-122.329	10.0g	2.7	122	km	WNW of Fort St. John
25/04/2014	1:11:53	56.509	-122.214	10.0g	1.5	88	km	W of Fort St. John
23/04/2014	12:56:45	56.409	-122.038	10.0g	1.8	75	km	W of Fort St. John
21/04/2014	23:28:41	56.06	-120.919	10.0g	2.5	21	km	SSW of Fort St. John
21/04/2014	23:58:54	56.523	-122.451	5.0g	2.3	103	km	W of Fort St. John
16/04/2014	13:37:51	56.503	-122.297	10.0g	1.6	93	km	W of Fort St. John
16/04/2014	12:13:19	57.017	-122.334	5.0g	1.5	124	km	WNW of Fort St. John
15/04/2014	15:24:13	56.506	-122.224	10.0g	2.1	89	km	W of Fort St. John
13/04/2014	13:12:17	56.993	-122.244	10.0g	2.8	118	km	WNW of Fort St. John
13/04/2014	6:24:59	56.523	-122.234	10.0g	2.3	90	km	W of Fort St. John
13/04/2014	3:37:32	56.501	-122.435	10.0g	1.2	101	km	W of Fort St. John
10/04/2014	5:31:09	56.516	-122.272	15.0g	2.7	92	km	W of Fort St. John
10/04/2014	19:28:44	57.011	-122.371	10.0g	1.8	125	km	WNW of Fort St. John
10/04/2014	2:50:12	56.486	-122.212	10.0g	1.7	87	km	W of Fort St. John
09/04/2014	22:29:47	56.377	-121.898	5.0g	2.4	66	km	W of Fort St. John
09/04/2014	2:56:16	57.008	-122.307	10.0g	2.2	122	km	WNW of Fort St. John
08/04/2014	7:02:40	56.179	-122.142	10.0g	1.9	80	km	W of Fort St. John
08/04/2014	23:44:40	56.463	-122.421	10.0g	1.3	99	km	W of Fort St. John
07/04/2014	7:28:22	57.287	-122.472	5.0g	1.5	152	km	WNW of Fort St. John
07/04/2014	3:28:46	56.492	-122.329	10.0g	1.3	95	km	W of Fort St. John
04/04/2014	11:04:36	59.893	-122.465	10.8*	1.5	120	km	NNE of Fort Nelson
01/04/2014	2:19:08	56.322	-122.097	10.0g	1.7	77	km	W of Fort St. John
31/03/2014	23:28:04	56.481	-121.843	5.0g	1.2	66	km	WNW of Fort St. John
29/03/2014	7:00:34	57.024	-122.174	5.0g	2.6	118	km	WNW of Fort St. John
29/03/2014	10:10:32	57.215	-122.593	10.0g	1.4	151	km	WNW of Fort St. John
20/03/2014	21:21:48	56.588	-121.589	10.0g	2.3	59	km	WNW of Fort St. John
16/03/2014	7:13:49	56.444	-121.791	5.0g	2.9	61	km	WNW of Fort St. John
14/03/2014	2:32:38	56.537	-122.324	0.0g	2.3	96	km	W of Fort St. John
13/03/2014	19:37:02	57.304	-122.474	5.0g	1.9	153	km	WNW of Fort St. John
12/03/2014	7:38:17	57.316	-122.437	10.0g	2.4	153	km	NW of Fort St. John
11/03/2014	15:15:27	57.314	-122.464	10.0g	2.9	153	km	WNW of Fort St. John
11/03/2014	17:22:24	57.314	-122.443	10.0g	2.5	153	km	NW of Fort St. John
11/03/2014	8:50:42	57.307	-122.451	10.0g	2.1	152	km	WNW of Fort St. John
11/03/2014	8:49:08	57.309	-122.498	10.0g	2.1	154	km	WNW of Fort St. John
11/03/2014	6:37:03	57.317	-122.485	10.0g	1.2	155	km	WNW of Fort St. John
10/03/2014	6:37:08	57.313	-122.428	5.0g	1.2	152	km	NW of Fort St. John

Date	Time_UT	Lat	Long	Depth	Mag	Region_and		
02/03/2014	22:24:23	57.295	-122.481	7.9*	3.2	153	km	WNW of Fort St. John
02/03/2014	10:39:44	57.335	-122.416	5.0*	2.6	153	km	NW of Fort St. John
02/03/2014	13:24:02	57.301	-122.461	9.2*	2	152	km	WNW of Fort St. John
01/03/2014	4:35:29	56.458	-121.766	5.0g	3.4	61	km	WNW of Fort St. John
01/03/2014	3:48:21	57.206	-122.489	5.0g	2.6	146	km	WNW of Fort St. John
01/03/2014	18:33:03	56.31	-122.043	14.7*	2.5	74	km	W of Fort St. John
01/03/2014	11:14:58	57.013	-122.299	12.4*	2.2	122	km	WNW of Fort St. John
27/02/2014	5:08:43	56.809	-122.007	10.0g	2	94	km	WNW of Fort St. John
25/02/2014	21:55:40	58.547	-122.967	5.0g	2.4	33	km	SW of Fort Nelson
19/02/2014	14:21:37	57.008	-122.263	10.0g	2	120	km	WNW of Fort St. John
19/02/2014	5:12:07	57.352	-122.592	5.0g	1.3	162	km	WNW of Fort St. John
18/02/2014	7:03:29	57.352	-122.595	5.0g	1.8	162	km	WNW of Fort St. John
11/02/2014	11:54:54	57.182	-122.541	5.0g	2.4	146	km	WNW of Fort St. John
09/02/2014	4:43:55	56.544	-122.346	10.0g	2.1	97	km	W of Fort St. John
07/02/2014	20:07:03	55.856	-120.324	5.0g	1.7	11	km	NW of Dawson Creek
07/02/2014	15:32:46	55.871	-120.386	5.0g	1.7	15	km	NW of Dawson Creek
28/01/2014	1:24:02	57.214	-122.384	5.0g	2	142	km	WNW of Fort St. John
27/01/2014	18:03:16	57.227	-122.548	5.0g	2	150	km	WNW of Fort St. John
23/01/2014	3:30:04	57.307	-122.705	10.0g	3	163	km	WNW of Fort St. John
23/01/2014	3:59:40	56.352	-121.83	10.0g	2.9	61	km	W of Fort St. John
23/01/2014	4:51:46	57.302	-122.666	10.0g	2	161	km	WNW of Fort St. John
23/01/2014	3:42:50	57.315	-122.744	10.0g	1.7	165	km	WNW of Fort St. John
22/01/2014	9:37:06	56.918	-122.001	10.0g	2.2	102	km	WNW of Fort St. John
22/01/2014	19:19:23	57.005	-122.25	10.0g	2	120	km	WNW of Fort St. John
21/01/2014	2:46:06	57.008	-122.272	10.0g	2.8	121	km	WNW of Fort St. John
21/01/2014	19:24:34	57.289	-122.705	5.0g	2.4	161	km	WNW of Fort St. John
21/01/2014	22:36:55	56.449	-121.849	5.0g	2	65	km	WNW of Fort St. John
19/01/2014	9:14:26	57.293	-122.727	5.0g	2.3	163	km	WNW of Fort St. John
17/01/2014	16:43:38	57.314	-122.611	12.2*	2.4	159	km	WNW of Fort St. John
16/01/2014	2:44:49	57.343	-122.446	5.0g	1.3	155	km	NW of Fort St. John
15/01/2014	0:04:43	57.29	-122.626	5.0g	2.7	158	km	WNW of Fort St. John
15/01/2014	4:22:34	57.303	-122.6	5.0g	1.9	158	km	WNW of Fort St. John
14/01/2014	16:10:52	57.315	-122.773	10.0g	2.8	166	km	WNW of Fort St. John
14/01/2014	12:40:22	57.328	-122.828	10.0g	2.6	165	km	S of Fort Nelson
14/01/2014	15:52:03	57.319	-122.678	10.0g	2	163	km	WNW of Fort St. John
13/01/2014	21:34:57	57.316	-122.532	0.0g	2.6	156	km	WNW of Fort St. John
13/01/2014	2:03:15	57.303	-122.726	10.0g	2.3	163	km	WNW of Fort St. John
13/01/2014	3:05:25	57.31	-122.717	5.0g	1.8	163	km	WNW of Fort St. John
12/01/2014	13:56:23	57.036	-122.211	10.0g	2.9	120	km	WNW of Fort St. John
11/01/2014	12:53:33	56.493	-122.242	5.0g	2.3	89	km	W of Fort St. John
06/01/2014	23:06:41	56.984	-122.263	1.0g	2.2	119	km	WNW of Fort St. John

Date	Time_UT	Lat	Long	Depth	Mag	Region_and		
29/12/2013	12:33:00	57.359	-122.339	12.7*	2.5	153	km	NW of Fort St. John
28/12/2013	11:40:02	57.378	-122.339	16.1*	2.5	154	km	NW of Fort St. John
28/12/2013	6:18:27	57.017	-122.178	5.0g	1.7	117	km	WNW of Fort St. John
28/12/2013	1:36:57	57.007	-122.261	7.6*	1.7	120	km	WNW of Fort St. John
25/12/2013	8:09:42	56.986	-122.217	5.0g	2.3	117	km	WNW of Fort St. John
24/12/2013	12:04:15	57.377	-122.315	10.0g	1.4	153	km	NW of Fort St. John
23/12/2013	12:26:05	57.379	-122.331	10.0g	2.4	154	km	NW of Fort St. John
23/12/2013	10:56:52	57.382	-122.303	10.0g	2.4	153	km	NW of Fort St. John
22/12/2013	9:46:23	56.468	-122.368	8.9*	1.9	96	km	W of Fort St. John
21/12/2013	0:53:58	56.294	-121.865	5.0g	2.4	62	km	W of Fort St. John
19/12/2013	6:06:20	56.477	-122.293	15.0g	1.7	92	km	W of Fort St. John
17/12/2013	2:34:05	56.542	-122.344	5.0g	2.5	97	km	W of Fort St. John
17/12/2013	14:01:32	56.406	-122.297	10.0g	2	90	km	W of Fort St. John
17/12/2013	11:59:18	57.187	-122.438	5.0g	1.9	142	km	WNW of Fort St. John
16/12/2013	3:52:41	56.493	-122.382	10.0g	2	98	km	W of Fort St. John
12/12/2013	7:59:33	56.089	-120.897	5.0g	2.1	18	km	SSW of Fort St. John
08/12/2013	16:48:09	56.318	-121.988	15.0g	1.8	70	km	W of Fort St. John
06/12/2013	15:43:43	56.974	-122.204	10.0g	2.6	115	km	WNW of Fort St. John
04/12/2013	12:06:37	56.453	-122.481	15.0g	2.2	103	km	W of Fort St. John
29/11/2013	16:29:00	56.746	-122.238	8.3*	2.8	101	km	WNW of Fort St. John
29/11/2013	7:38:32	56.55	-122.416	13.5*	2.5	102	km	W of Fort St. John
23/11/2013	13:14:56	56.894	-122.058	14.5*	2.3	103	km	WNW of Fort St. John
21/11/2013	7:36:28	56.758	-122.044	5.0g	2.1	92	km	WNW of Fort St. John
18/11/2013	8:33:05	56.411	-121.648	5.0g	2.7	52	km	WNW of Fort St. John
18/11/2013	20:00:32	56.714	-122.034	5.0g	2.3	89	km	WNW of Fort St. John
10/11/2013	2:34:07	56.988	-122.176	5.0g	2.4	115	km	WNW of Fort St. John
09/11/2013	13:14:26	56.984	-122.194	5.0g	2	115	km	WNW of Fort St. John
06/11/2013	12:13:55	56.42	-121.791	10.0g	2.7	61	km	W of Fort St. John
01/11/2013	22:10:39	56.892	-121.817	5.0g	1.9	92	km	WNW of Fort St. John
30/10/2013	2:43:37	56.509	-122.196	10.0g	2.3	87	km	W of Fort St. John
28/10/2013	12:01:03	55.906	-120.282	5.0g	2.7	15	km	NNW of Dawson Creek
26/10/2013	18:02:43	57.008	-122.283	5.0g	2.3	121	km	WNW of Fort St. John
26/10/2013	2:42:30	57.014	-122.23	6.9*	1.8	119	km	WNW of Fort St. John
25/10/2013	11:31:59	55.89	-120.24	5.0g	2.4	13	km	N of Dawson Creek
25/10/2013	19:06:36	55.9	-120.225	5.0g	2.3	14	km	N of Dawson Creek
25/10/2013	9:05:11	55.9	-120.26	5.0g	2.1	14	km	NNW of Dawson Creek
24/10/2013	5:10:45	55.901	-120.296	5.0g	2.8	15	km	NNW of Dawson Creek
24/10/2013	0:42:41	55.891	-120.279	5.0g	2.2	14	km	NNW of Dawson Creek
24/10/2013	12:40:48	57.03	-122.302	10.0g	1.8	124	km	WNW of Fort St. John
23/10/2013	7:55:37	55.921	-120.362	8.3*	2.2	18	km	NW of Dawson Creek
23/10/2013	9:33:56	55.888	-120.367	16.4*	2	15	km	NW of Dawson Creek

Date	Time_UT	Lat	Long	Depth	Mag	Region_and	
23/10/2013	15:02:47	55.902	-120.285	14.3*	1.9	15	km NNW of Dawson Creek
23/10/2013	17:46:12	55.941	-120.378	5.0g	1.6	21	km NW of Dawson Creek
23/10/2013	8:41:44	55.918	-120.287	5.0g	1.4	17	km NNW of Dawson Creek
23/10/2013	9:05:39	55.872	-120.087	9.1*	1.2	14	km NE of Dawson Creek
18/10/2013	10:37:33	55.914	-120.377	5.2*	2.4	18	km NW of Dawson Creek
18/10/2013	9:49:08	55.878	-120.211	5.0g	2.2	12	km NNE of Dawson Creek
18/10/2013	7:16:05	55.917	-120.314	5.0g	2.2	17	km NNW of Dawson Creek
18/10/2013	9:05:15	55.661	-121.099	10.0g	2.1	55	km W of Dawson Creek
18/10/2013	9:23:21	55.85	-120.057	5.0g	1.6	14	km ENE of Dawson Creek
18/10/2013	8:39:14	55.896	-120.408	5.0g	1.4	18	km NW of Dawson Creek
16/10/2013	17:46:10	56.993	-122.233	10.0g	3	118	km WNW of Fort St. John
14/10/2013	2:33:12	57.019	-122.178	5.0g	2.7	118	km WNW of Fort St. John
14/10/2013	9:34:11	59.783	-122.707	10.0g	2	107	km N of Fort Nelson
07/10/2013	20:52:22	57.015	-122.144	1.0g	1.8	116	km WNW of Fort St. John
02/10/2013	23:00:56	57.421	-122.757	5.0g	2.5	155	km S of Fort Nelson
02/10/2013	22:54:47	57.436	-122.769	5.0g	2.5	153	km S of Fort Nelson
02/10/2013	7:25:58	57.429	-122.706	1.0g	1.4	154	km S of Fort Nelson
17/09/2013	7:19:26	59.777	-122.769	9.4*	2.6	106	km N of Fort Nelson
04/09/2013	22:34:18	56.571	-122.238	5.0g	1.8	92	km WNW of Fort St. John
03/09/2013	2:45:26	56.476	-121.738	5.0g	3.3	60	km WNW of Fort St. John
01/09/2013	16:12:38	56.188	-121.954	11.8*	2.4	68	km W of Fort St. John
01/09/2013	17:30:47	56.185	-121.838	11.2*	1.9	61	km W of Fort St. John
01/09/2013	16:12:38	56.187	-121.953	11.7*	1.9	68	km W of Fort St. John
31/08/2013	11:14:22	56.9	-122.016	6.7*	2.7	101	km WNW of Fort St. John
26/08/2013	13:34:18	56.926	-121.902	1.0g	2.2	99	km WNW of Fort St. John
26/08/2013	18:30:27	56.168	-121.621	5.0g	1.9	48	km W of Fort St. John
23/08/2013	5:42:28	56.912	-122.024	6.6*	2.1	103	km WNW of Fort St. John
22/08/2013	1:36:50	56.913	-122.067	5.0g	2.2	104	km WNW of Fort St. John
21/08/2013	15:31:31	56.907	-122	10.0g	3.4	101	km WNW of Fort St. John
21/08/2013	0:05:40	56.911	-122.063	5.0g	2	104	km WNW of Fort St. John
21/08/2013	0:04:16	56.887	-121.965	1.0g	1.5	98	km WNW of Fort St. John
20/08/2013	4:04:34	56.925	-121.959	1.0g	1.6	101	km WNW of Fort St. John
20/08/2013	23:54:37	56.932	-122.055	5.0g	1.5	105	km WNW of Fort St. John
19/08/2013	17:42:51	56.926	-121.984	5.0g	1.9	102	km WNW of Fort St. John
16/08/2013	19:42:38	56.098	-120.882	1.4*	2.6	17	km SSW of Fort St. John
14/08/2013	0:14:48	56.236	-121.764	0.0g	2.1	56	km W of Fort St. John
10/08/2013	3:13:33	56.182	-121.794	1.7*	2.3	58	km W of Fort St. John
09/08/2013	3:46:17	56.218	-121.942	10.4*	2	67	km W of Fort St. John
07/08/2013	7:06:21	56.476	-122.207	10.0g	2.5	87	km W of Fort St. John
30/07/2013	17:09:42	56.242	-122.13	0.1*	2.4	79	km W of Fort St. John
27/07/2013	12:30:28	56.515	-122.282	10.0g	2	93	km W of Fort St. John

Date	Time_UT	Lat	Long	Depth	Mag	Region_and		
25/07/2013	3:20:53	56.175	-121.929	10.0g	2.2	67	km	W of Fort St. John
25/07/2013	18:03:56	56.222	-121.984	5.0g	1.9	70	km	W of Fort St. John
25/07/2013	16:14:00	56.2	-122.142	5.0g	1.8	80	km	W of Fort St. John
25/07/2013	19:24:32	56.162	-121.892	10.0g	1.7	65	km	W of Fort St. John
16/07/2013	7:51:14	56.581	-122.089	5.0g	2.3	84	km	WNW of Fort St. John
13/07/2013	6:36:57	56.082	-121.026	1.0g	2.7	21	km	SW of Fort St. John
29/06/2013	6:57:17	56.074	-120.819	1.0g	2.9	19	km	S of Fort St. John
02/06/2013	0:56:05	56.011	-120.786	1.0g	2.5	26	km	SSE of Fort St. John
28/05/2013	4:36:08	56.145	-120.868	5.0g	4.2	11	km	S of Fort St. John
28/05/2013	4:48:25	56.073	-121.023	10.0g	2.8	22	km	SW of Fort St. John
27/04/2013	2:06:44	56.531	-121.823	0.0g	1.9	67	km	WNW of Fort St. John
24/04/2013	2:06:01	56.298	-121.976	15.0g	2.2	69	km	W of Fort St. John
16/04/2013	5:37:37	56.391	-122.049	1.0g	2.5	75	km	W of Fort St. John
10/04/2013	2:44:26	56.331	-121.916	10.0g	2.1	66	km	W of Fort St. John
07/04/2013	2:39:11	56.342	-121.852	10.6*	3.5	62	km	W of Fort St. John
07/04/2013	12:52:25	56.269	-121.714	20.0g	2.9	53	km	W of Fort St. John