

Upstream Electrification Enabling Project RFP Inquiry #1 Questions and Responses

1. Regarding deliverable #1 "project dashboard", please confirm if the dashboard is intended to include all the potential projects linked to electrification (e.g., wind farm X, oil and gas facility Y, substation Z) or higher level (e.g., different policies or protocols such as Blueberry River First Nations Implementation Agreement).

The Project Dashboard is to demonstrate Project progress, deliverables and management of Project risks through regular (e.g. monthly) updates. It should reflect the steps undertaken by the Proponent to complete the Project. Information should be presented at a level suitable for reporting to the Project Steering Committee. As such the dashboard is expected to provide a high-level view of relevant activities, rather than a comprehensive inventory of all individual electrification projects.

2. Will OGRIS facilitate obtaining information from the different entities, e.g., CAPP, BC Hydro, various Treaty 8 First Nations?

Yes, through the Project Steering Committee.

3. Please confirm if deliverables must only contain publicly available information. (I am presuming that much of the information will be subject to confidentiality agreements.)

No. There are several deliverables itemized in the RFP under the heading "Deliverables" that may contain sensitive information, obtained potentially under confidentiality data agreements. In the RFP, under the data management section, Proponents are required to describe how they will manage such data to ensure business sensitivity and confidentiality are maintained, as data sharing agreements may be required. It is possible that information gathered as part of the Project may be new information and acceptable to be included in the final report that will be posted to the OGRIS website. With respect to the final report deliverable, the RFP states any confidential information should be submitted in a separate document clearly marked as confidential information related to the project.

4. Can OGRIS share a map of the area(s) of investigation?

The geographic scope is described as Northeast BC, primarily focused on areas south of the Peace River and North Montney. South of the Peace River is generally known as the area with the Peace River as the northern boundary, Rocky Mountains to the west/south and Alberta border to the east. Included in this response is a map of the BC area of the Montney Formation. North Montney is generally the area of the Montney formation North of the Peace River.

5. Will analysis be restricted to the mapped areas? Are recommendations expected to apply to only the mapped areas, or more broadly to Northeastern BC?

The study will primarily focus on areas south of the Peace River and the North Montney; however, there could be electrification or generation interests outside of this area. Management considerations may be applicable more broadly to all northeastern BC.

6. What transmission assumptions will be used in the analysis? For example, is it only announced transmission projects, or potential projects as well? Should future potential interties with Alberta be considered?

The area of interest with respect to oil and gas electrification is the North Montney; however, there may be areas in the Montney south of the Peace River that could be included and potential generation projects may also have transmission considerations. The potential intertie with Alberta is out of scope.

7. How should BC Hydro's intention for a new generation project be treated within the analysis?

It is out of scope.

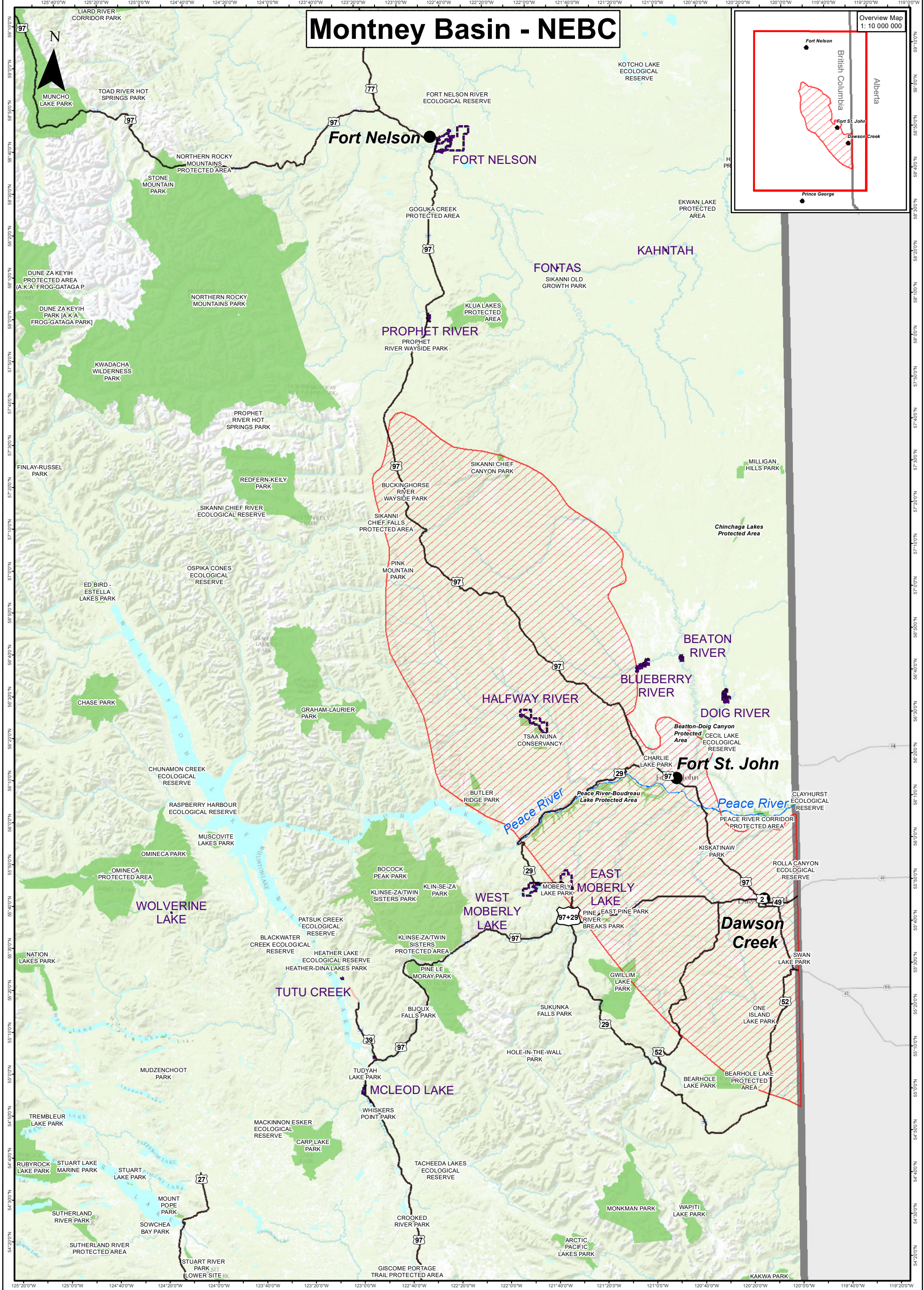
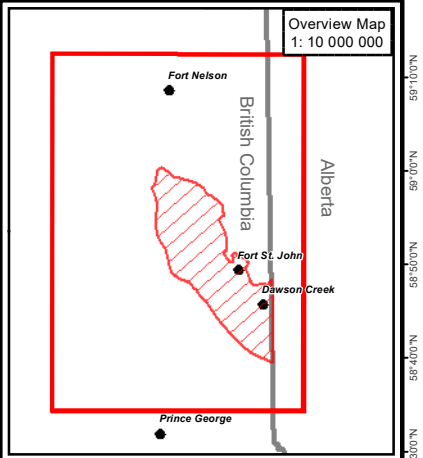
8. Over what period of time should the demand and supply forecast of electricity be considered?

The Project will consider existing information from available and credible sources that could include demand/supply information forecasting up to 2040 and potentially beyond.

9. Are all Treaty 8 Nations to be consulted or engaged? (including in Alberta?)

The Project is focused on BC Treaty 8 Nations.

Montney Basin - NEBC



Datum: NAD 1983
Projection: BC Environment Albers
1:1,500,000

0 15 30 60
Kilometers

Created by: Northeast Initiatives Division
Date: 2026-06-25

Legend

- City / Town
- First Nation
- Highway
- Montney Basin
- Park / Protected Area